

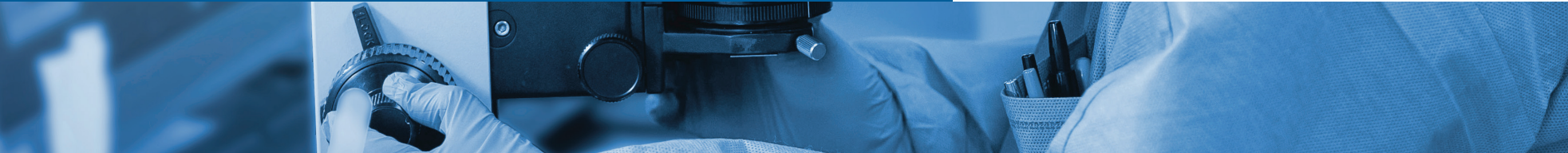
Fostering Healthy Rural Communities



2021 ANNUAL REPORT



Friends of
Bassett Healthcare Network





Message from the President of the Friends of Bassett Healthcare Network Board

Usually, an annual report reflects on the last 12 months, but to truly understand where our health system has been, is today, and will be in the future, I'd like to take a much longer view of our history.

In 1922 Little Falls Hospital, the oldest hospital in our network, had been open for nearly 30 years. A.O. Fox Hospital had been operating in Oneonta for over 20 years, and the Franklin Street Hospital Association, later O'Connor Hospital, was newly formed and had just elected their first board of directors. Later that year, in June, Mary Imogene Bassett Hospital in Cooperstown, now known as Bassett Medical Center, opened its doors to the public.

A century ago, doctors, nurses, and private citizens committed to improving the health of our rural communities invested their time and resources, sowing the seeds of what would become Bassett Healthcare Network. Today, our mission is unchanged. Bassett Healthcare Network exists to improve the health of our patients and the well-being of our community.

That is the simple version of the story.

The more complex truth is that, along with many successes, our history also includes difficult times when we faced closures, financial trouble, and tragedy. These, however, are not what have

defined us. Over and over again, we approached these challenges as opportunities, innovated, and transformed with the support of caregivers, practitioners, and friends who shared an unwavering commitment to our mission.

In 2021, we have found ourselves, once again, at a pivotal moment for our organization. To provide exceptional care to our patients and improve the health of the rural communities we serve, we must remain a thriving, independent health system. For Bassett Healthcare Network that means being on the forefront of innovation in care delivery, transforming our network into a truly integrated health delivery system, and continuing to keep our mission at the center of everything we do.

For the last century, we have relied on the generosity and support of our friends and community members who share our vision of creating healthy rural communities. That is as true today as it has ever been. I truly believe our future is bright. Thank you for your continued support of Bassett Healthcare Network, our patients, and our community.

Tommy Ibrahim, MD, MHA
President & CEO, Bassett Healthcare Network

Message from the Chair

of the Friends of Bassett Healthcare Network Board



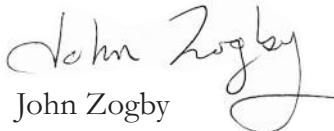
I would like to express my sincere gratitude for the opportunity to serve as chair of the Friends of Bassett board. 2021 has been an exciting year not only for Bassett Healthcare Network but for the Friends of Bassett as well. We experienced a successful expansion of the Friends of Bassett team to a full complement prepared to launch a major campaign for the future. Friends of Bassett has integrated its funds and finances into one effective system for an improved monitoring process. Although the past few years have come with many challenges, I have personally met with each member of the Friends of Bassett board and I am happy to report a strong level of enthusiasm and commitment that is already serving us well as we look into Bassett's future.

Being able to provide health and medical care for communities is a challenge for all healthcare organizations, especially in traditionally under-served rural areas. Here at Bassett, we have the right leadership, vision, compassion, attitude and the highest level of professionalism to not only address these challenges

locally but also to serve as a role model for other rural health care organizations nationwide. As we look to the future, you will be hearing about Bassett Healthcare Network sponsoring a national symposium for healthcare professionals as Bassett will take the lead on how to face challenges in healthcare going forward.

This year, I have had the honor to take the reins from Kathleen Johnson's exemplary leadership. I am equally honored to help move our efforts forward. I encourage you to review the Friends of Bassett 2021 Annual Report. I think you will find the details in the annual report to be inspirational as Bassett continues to be an innovator in the healthcare community. Your philanthropy supports projects critical to the well-being of all of our patients and the communities we serve. I remain incredibly confident in the dedication and efforts of our caregivers, practitioners, community, and you, our donors. Thank you for your support.

With gratitude,


John Zogby
Chair, Friends of Bassett

Dr. Sorensen Honored with Prestigious National Researcher Award

Dr. Julie Sorensen, director of Bassett's New York Center for Agricultural Medicine and Health (NYCAMH) and Northeast Center for Occupational Health and Medicine (NEC), was recently honored with the Safety & Health Researcher Award at the North American Agricultural Safety Summit in Las Vegas. The award was established by the Agricultural Safety and Health Council of America (ASHCA) to "acknowledge leaders who have made significant contributions to the advancement of worker health and safety," said ASHCA Board Chair Jess McCluer in a news release announcing the award March 29.

Sorensen, who has been with NYCAMH since 2001 and took over leadership of NYCAMH and the Northeast Center in 2014, has dedicated her career to investigating agricultural health and safety issues, understanding the root causes, and identifying solutions in partnership with the communities she is trying to help. Her research focuses on behavior change strategies that encourage the use of risk-reduction technologies.

Dr. John May, founder and former director of NYCAMH and the Northeast Center, said Sorensen "listens to the workers carefully and then networks—recruiting just the right collaborators to assure a successful outcome. She is determined to translate the findings of research into meaningful and practical interventions that will have a direct impact on workers. As a result, work environments are safer and lives have been saved."

Sorensen's notable contributions to the safety of agricultural workers in this country include the development of a National ROPS Rebate Program. First launched in New York State in 2006, the program has succeeded in increasing the use of tractor rollover protective structures (ROPS) by addressing the financial, logistical, and perceptual barriers farmers face when considering retrofitting older tractors with ROPS.

Tractor rollovers are the leading cause of farm fatalities in the U.S. Since the ROPS program's inception in New York, it is estimated at least 10 lives and more than four million dollars were saved. A study co-authored by Sorensen and published in 2019 also found the program was responsible for preventing eight disabling injuries and six nondisabling injuries over a 10-year period. Further, this public health inter-



vention has become a model for the rest of the country with several other states adopting similar ROPS rebate programs, including Pennsylvania, Vermont, Massachusetts, New Hampshire, Wisconsin, and Minnesota.

Sorensen was also the principal investigator for Lifejackets for Lobstermen, a NEC project that sought to address the most frequent cause of death in the Northeast lobster industry—falls overboard. A team from the Northeast Center traveled the New England coast working with lobstermen to identify comfortable personal flotation devices (PFDs) and eliminate the challenges to using them. The outcome? More than 1,000 discounted PFDs were distributed to lobstermen at 58 New England ports in 2019 and in 2020, an international PFD work group was formed to continue addressing personal flotation use behavior in the commercial fishing industry.

Investing in Our Children by Increasing Access to Care



Several years ago, the superintendent of Cherry Valley-Springfield Central School (CVS) approached administrators of Bassett's School-Based Health program (SBH) to ask about establishing a school-based health center (SBHC) in the district's K-12 building. The school, located on County Road 54 in Cherry Valley,

has close to 500 students who could benefit from having comprehensive and preventative medical, mental, dietary, and dental care available where they spend most of their time, in school.

"This is such a powerful opportunity for our school," notes TheriJo Snyder, the school's superintendent. Snyder put a SBHC on the wishlist when she became superintendent at CVS six years ago because she had seen the benefits while principal in the Richfield Springs School District. "Those students who generally do not get health care have the opportunity, students do not miss school, and parents do not have to miss work. The mental health piece is a huge bonus. Then you add the dental piece. Overall, it makes the school a healthier place to be."

Recently, Doug and Ginny Hastings, who have a home in the Cherry Valley-Springfield School District, learned of the desire to establish a SBH program there. Doug is the chair of the Bassett Healthcare Network Board of Directors and Ginny is a retired special education teacher. Knowing how impactful the availability of on-site medical care has been for hundreds of rural families served by Bassett's school-based health centers in other districts, the Hastings committed to jump starting the project for CVS with a generous leadership gift and pledged an equal amount towards completion of the SBHC once a matching gift is raised. Community fundraising is underway.

"The bottom line is a school-based health center for CVS could not happen without them," states Jane Hamilton, practice manager for Bassett's school-based health program. "They saw a need and stepped in to fill the gap. We are forever grateful."

"I cannot thank them enough for their generosity," says Snyder. "It means a lot to us and our families. A SBHC has been on the wishlist for a very long time."

Once fundraising is complete and the SBHC constructed, the New York State Department of Health must conduct a site visit and approve the facility. Snyder says the district's goal is to have the SBHC operational by the fall of 2023.

Bassett's SBH program, established in 1992, operates 21 school-based health centers in 17 school districts, and several more schools have expressed an interest in the program. During the 2018-2019 school year, Bassett's SBHCs handled a total of 37,639 student visits. In the 2020-2021 school year, despite schools going 100% remote due to the COVID-19 pandemic, the SBH program was still able to complete 30,751 visits. This was thanks to an incredibly committed team of office staff, nurses, practitioners, and mental health clinicians who were already comfortable using digital technology for virtual visits, having launched telehealth in their SBHCs four years earlier.

During the pandemic, the SBH program added telepulmonology so that children with rare or complex pulmonary conditions could be seen by a pediatric pulmonology specialist at the University of Rochester Medical Center through video conferencing. Most recently, Bassett added teledentistry to its SBH services. Using a portable x-ray unit and digital radiography, a student's dental issues can be assessed and a treatment plan developed remotely by Bassett's Chief of Dental Services Dr. Leah Carpenter.

School-based health care that offers comprehensive and preventative services, like those available in Bassett's program, is one way we can help assure the health of our children so they can be successful. High returns from your investments in our kids. Thank you!

If you'd like to support the Cherry Valley-Springfield SBHC project, visit [friendsofbassett.org](https://www.friendsofbassett.org) or contact Sheila LeMaster, Director of Development, Impact Gifts, at Sheila.LeMaster@bassett.org.

Building Trust in Science. Lessons from the COVID-19 Pandemic

“Even the most brilliant health and safety solutions will do little good if people do not embrace them.”

– Dr. Julie Sorensen, Director, Northeast Center

Year two of the coronavirus pandemic saw variants surge around the country. Hospitalization rates continued to challenge Bassett network caregivers, and the work to drive back covid by increasing vaccination rates was problematic across the state. Through it all, a major contributor to Bassett’s pandemic response and that of the region’s business and educational communities was the team at the New York Center for Agricultural Medicine and Health (NYCAMH), which also serves as headquarters for the Northeast Center for Occupational Health and Safety (NEC).

The NYCAMH/NEC team has decades of experience in health and safety research, education, and illness and injury prevention. In 2020 and again in 2021, as COVID-19 continued to reshape work environments, that expertise proved invaluable. The team at NYCAMH/NEC has also been a critical resource for nontraditional workers struggling to hold onto their livelihoods in the Northeast’s farming, forestry and fishing industries.

Addressing a distrust of science

Widespread understanding and acceptance of proven pandemic solutions has been a challenge for a variety of reasons, but perhaps chief among them is communication. Dr. Julie Sorensen, director of NYCAMH/NEC, says the pandemic has “highlighted the need for scientists to understand public health and safety issues from the community’s perspective, so that we can more effectively translate what we know into action. Even the most brilliant health and safety solutions will do little good if people do not embrace them,” observes Sorensen (Read her full message regarding the work of the Northeast Center in 2021 at necenter.org).



NYCAMH and NEC staff worked doggedly throughout the pandemic to educate and help rural workers and employers implement proven strategies for protecting against covid, tailoring their innovative solutions to unique work settings on farms, fishing vessels and logging operations. But before they could get vaccine into the arms of workers or masks on faces, they had to first communicate the need for preventive measures.

“We were fighting what everyone in the medical community was fighting – misinformation and disinformation campaigns,” says Sorensen. “It became quite obvious that just because we in the scientific world are talking about and living this work every day doesn’t mean our language fits into the world of the communities we serve.”

Building relationships and trust

The team’s pandemic experience helped spur development of the Northeast Center Clear Communications

Campaign. The goal is to encourage the agriculture, forestry and fishing communities to embrace health and safety solutions, not just during covid but across problem areas, by improving research transparency and communication. The strategies include the following tactics in 2022:

- Scientific Dialogue Gatherings to “build scientific literacy and share research outcomes” in online, interactive sessions with members of the agriculture, farming and forestry communities.
- Alan Alda Center for Communicating Science Workshops – NEC/NYCAMH staff will participate in workshops designed to help researchers better understand the communities they serve and have “honest, productive conversations around science and health solutions.”

“There appears to be a growing distrust of science globally,” notes Sorensen. “We need to recognize that and work harder to regain the public’s trust, expand the knowledge of what science can do and does for them so they will be more engaged.”

The Northeast Center Clear Communications Campaign and the COVID-19 preventive efforts are just a fraction of the innovative and impactful work of the NEC and NYCAMH teams, who have been making a difference in the lives of rural workers for decades. Read more about the centers’ current projects at necenter.org.

“Everyone here does an incredible job of understanding and identifying the needs of our communities and developing relevant solutions in a way that makes positive change possible. To them it’s not just a job, it is their passion,” Sorensen says.

NEC & NYCAMH 2021 Pandemic Successes

- Worked with the Centers for Disease Control and Prevention to develop COVID-19 guidance for the country's agriculture employers.
- Dr. Sorensen drafted a letter, cosigned by Agrisafe and Virginia's agriculture commissioner, to former Vice President Mike Pence explaining the critical need for a protected supply of N95 respirators and other personal protective equipment for the farm community, which handles hazardous chemicals as part of everyday operations.
- The NYCAMH team, which includes bilingual staff who translate for migrant workers, developed mobile, onsite vaccination clinics, immunizing more than 200 individuals on farms in New York before vaccine availability improved in rural communities.
- Implemented a STOP COVID on Your Farm program to help agriculture employers improve ventilation, add handwashing stations and implement other infection prevention strategies.
- Developed and distributed 23,000 copies of a children's coloring book and a COVID-19 informational booklet specifically for Anabaptist communities in the Northeast.
- Conducted a survey of farmers and loggers and interviews with commercial fishermen in the Northeast to understand how COVID-19 was affecting the populations served by NYCAMH/NEC.
- NYCAMH/NEC played a major role in respiratory fit testing of staff at Bassett as well as at area law enforcement agencies, nursing homes and other rural businesses to ensure workers were properly protected against covid and other aerosol transmissible diseases.
- Assisted with coronavirus testing in the region, conducting tests on approximately 2,100 individuals from area businesses and educational institutions.

2021 Non-COVID NEC/NYCAMH Health & Safety Projects

- Dairy Safety Nudging Project – Pilot program using behavioral science methods to promote work safety on New York dairy operations. The idea is to adjust the work environment or processes in ways that naturally redirect people to do the safer thing.
- Fishing Forward Podcast – A new way of sharing information that brings researchers and commercial fisherman together to understand how to address sleep deprivation, stress, exercise and similar issues in order to maximize health, productivity and profitability.
- Sleep Deprivation at Sea Study – Collaborative effort with fishermen in Alaska, Oregon and the Northeast to understand effects of sleep deprivation on the health and safety of commercial fishermen. The project includes the trialing of wearable devices to track participants sleep with the eventual goal of identifying potential solutions for optimizing sleep while working at sea.
- John May Farm Safety Fund – Has awarded over \$545,000 in grants to 141 farms to make safety improvements related to animal handling, electrical improvements and general farm safety.
- Maine Logger Health and Safety Study is an effort to work with the industry to identify practical solutions to improving the overall health of loggers in the Northeast.

Your support helps make the work described here possible and the lives of people residing and working in rural communities sustainable and safe. Thank you!

Technological Advances Keep Bassett at the Forefront

The technological advances in medicine and hospital care over the past few decades are astonishing and have been transformative, benefiting patients and caregivers in a number of ways. Keeping up with the rapid pace of change requires significant resources. Just last year, your philanthropy enabled Bassett to invest in cutting-edge technology to benefit

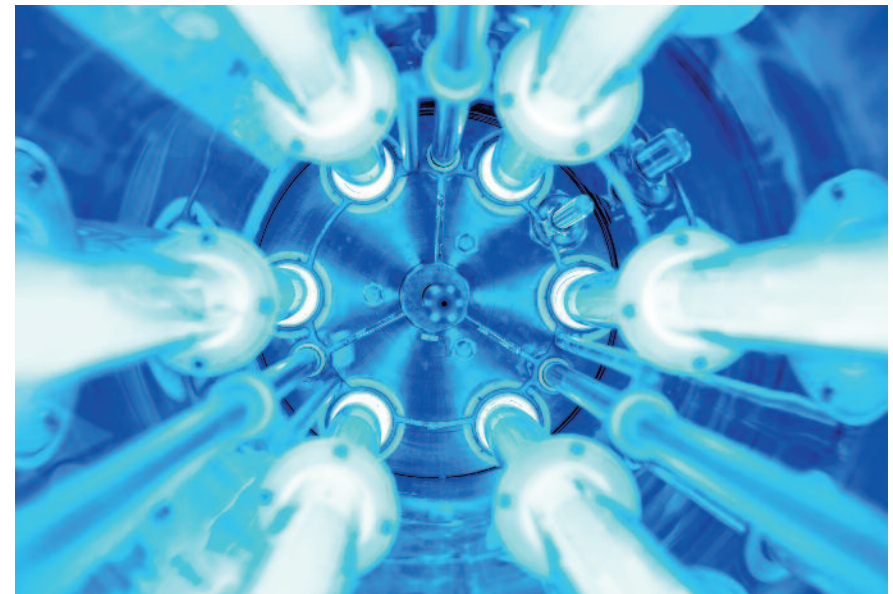
patient safety, caregiver communication, and patient outcomes in the surgical suite. The investments help assure the population we serve continues to have access to the best possible care and maintain Bassett's position as a leader in rural medicine. In this section, we review a few of the advancements you made possible.

Investment in “No Touch” Disinfection Technology Boosts Patient Safety

Winning the war against healthcare-associated infections (HAIs) and COVID-19 requires a multi-faceted approach. In 2021, your gifts enabled Bassett to invest in high-energy ultraviolet light (UV-C) disinfection technology to make our hospital environments the safest possible for the network's patients and caregivers.

High-energy ultraviolet light (UV-C), used extensively for water, food and air purification, is newer to the medical environment, but research over the past several years shows it can be highly effective against a variety of disease-causing pathogens. Research during the pandemic suggests UV-C may have a significant role to play in mitigating the spread of COVID-19 in clinical settings. For these reasons, Bassett Healthcare Network launched a campaign that raised \$250,000 to provide every hospital in the network with the latest generation UV-C technology.

A.O. Fox Hospital was the first hospital in the network to implement ultraviolet light disinfection processes in 2017. A subsequent study found that terminal cleaning using UV-C on 14 private rooms and 5 operating rooms in the hospital reduced the microorganism burden on tested surfaces as much as 14%. UV-C technology does not replace, but rather enhances, the traditional manual cleaning processes used in clinical spaces.



All Bassett Healthcare Network hospitals now have UV-C light disinfection systems as part of a comprehensive environmental disinfection strategy to eliminate pathogens that can survive on hospital surfaces for days.

Among the philanthropic contributions that made this possible were those from Stewart's Shops/The Dake Family, Fenimore Asset Management, New York Central Mutual, and the Samuel S. Dale Trust, as well as many other generous donors across the Network. Thank you for supporting enhancements to patient safety!

A New Telemetry System at Fox Hospital & the Potential for Scalability



Thanks to your generous support, the campaign to raise funds for a major upgrade to the telemetry system at Fox Hospital achieved its \$375,766 goal in early 2022.

Telemetry systems collect patient vital signs, such as blood pressure, oxygen saturation, respiration, and heart rhythms. That data is transmitted to a central information center for remote patient monitoring.

However, like all technology, the equipment needed to be upgraded, and has been, with new monitors and sensors being deployed this past spring.

Replacing the equipment at Fox Hospital provided Bassett Healthcare Network with the opportunity to invest in a sophisticated telemetry system that has the potential for scalability – it is capable of monitoring anywhere from 4 to 1,920 patients.

The project had three main components: The physical patient monitors, which are compact wearable “wireless” monitors. A Windows-based information center capable of providing continuous, simultaneous monitoring of wired, wireless, and bed-based units, and a the third component- the facility and information technology upgrades that were necessary for the system to operate.

An additional feature of this particular telemetry system is that it can be integrated with the new Vocera communication system at Fox, enabling nurses to receive real-time telemetry updates directly to their Vocera device anywhere in the hospital.

New Communications Platform Enhances Patient Care & Satisfaction

Real-time communication, particularly at the point of care, has never been more important than during the COVID-19 pandemic. Thanks to the strong support of community members, local foundations and hospital boards, a new, state-of-the art communication platform, known as Vocera, was installed at A.O. Fox Hospital last year. The intent of the new platform is enhanced clinical communication and operational efficiency among care teams, leading to even better patient care and patient satisfaction.

Vocera is a wearable, hands-free communication system that enables nurses, doctors, and other team members to communicate in real-time. This allows caregivers to receive critical information at the patient’s bedside rather

than having to leave the room or pick up the phone. The hands-free feature of the system is particularly beneficial to clinicians wearing layers of personal protective equipment (PPE) while caring for covid patients. The communication device can be worn under PPE, which means nurses no longer have to leave the patient’s room to communicate with a member of the care team and then remove and reapply new PPE. This provides the additional benefit of significant cost savings due to the reduced consumption of PPE.

The new communication platform and its implementation cost slightly more than \$170,000, an investment that is yielding big dividends for caregivers and their patients. Thank you for your support!



Cutting-edge Technology in the Operating Room

Cutting-edge technology in the operating room is essential to the anesthesia and surgical teams' ability to achieve optimal results. Among the philanthropic gifts that have had a tangible impact in the operating suite at Bassett Medical Center are two advanced patient monitoring platforms known as Hemosphere units. The technology was gifted to the Department of Surgery by Bill and Lynn Moseley who now live in New Hampshire. Bill, who is also the Friends of Bassett Board of Directors' secretary, continues to drive four hours to Cooperstown for any major medical procedure.

“People ask why I don't go to a big name medical center in New England. In my experience, you feel like you are simply a number in such large institutions. At Bassett,

you are treated as a true person and get superior care.”

“It is absolutely huge that Mr. Moseley made this particular donation,” explains Chief of General Surgery Dr. Raul Monzon. The technology gives Bassett a tremendous leg up. The hemosphere units are an amazing tool that enhance safety for complex patients and enable our surgical teams to provide a higher level of care.”

The Hemosphere units provide a minimally invasive method to monitor a patient's blood circulation and heart function, which allows the perioperative team to evaluate whether the patient is receiving enough oxygen to their organs and tissues. This enables the team to make proactive, informed and potentially life-saving decisions during surgery.



Thank you for making such an impactful difference in the lives of our patients!

Patron Society

The Patron Society recognizes leadership donors who made annual gifts of \$25,000 or more during 2021 to the Friends of Bassett.

INDIVIDUALS

David & Joyce Barber
Jane Forbes Clark
Ms. Susan Law Dake
Daryl & Phyllis Forsythe
Walter B. Gladstone
Elizabeth & Philip Green
Doug & Ginny Hastings
Dan & Elaine Robinson

ORGANIZATIONS AND BUSINESSES

Burrows Foundation
Capital District Physicians' Health Plan, Inc.
The Clark Foundation
The Community Foundation of Herkimer & Oneida Counties, Inc.
Couse Family Trust
Davin Healthcare

Fenimore Asset Management, Inc.
Fernleigh Foundation
Fidelity Charitable Gift Fund
Foundation for Long Term Care
Gladys Brooks Foundation
Jean Beverly Couse Trust
M&T Bank
M&T Charitable Foundation
Mother Cabrini Health Foundation
NYCM Insurance
Raymond James
The Riley & Lillian Warren & Beatrice W. Blanding Foundation
Saint Agatha Foundation
SEFCU
Stewart's Shops and the Dake Family, a fund of the Community Foundation for the Greater Capital Region
Upmobility Foundation, Inc.

Founder's Circle

Founder's Circle donors are recognized for having made annual gifts in 2021 to the Friends of Bassett of \$10,000 to \$24,999.

INDIVIDUALS

Anonymous (2)
Scott Clark
Arnold M. Drogen
Mrs. Irene Euron
Nellie & Robert Gipson
Charlotte & Charles Hill
Marian & Tommy Ibrahim
Maureen Killackey, M.D., & Bruce Pinkernell, M.D.
Connie & Alan Leist
Erna Morgan McReynolds & Tom Morgan
Margaret & Arthur Palmer
James Patrick Family
Francesca Zambello & Faith Gay

ORGANIZATIONS AND BUSINESSES

A.O. Fox Memorial Hospital Auxiliary
AOW Associates, Inc.
Clark Companies/Sportsfield Specialties, Inc
The Delaware National Bank of Delhi
The Dewar Foundation, Inc.
Epic Systems Corporation
HANYS Benefit Services
J & S Patrick Family Foundation
McCarthy Building Companies, Inc.
MorganStanley SmithBarney
National Philanthropic Trust
Plumbers & Pipefitters Local 112
Samuel S. Dale Trust
The Tianaderrah Foundation

Chairman's Circle

The Chairman's Circle recognizes donors who contributed between \$5,000 and \$9,999 during 2021 to the Friends of Bassett.

INDIVIDUALS

Anonymous
Debra & Louis Betrus
John Bramley
Dr. & Mrs. Malcolm McDougal Brown
Gloria & Eugene Cole
Mr. & Mrs. Eugene D. Cole
Michelle & Richard Eastman
Donald F. Farley
Victoria D. Graham
Betty & Pat Hamel
Mary Ellen & Gates Hawn
Drs. Laura & Mun Hong
Susan & Thomas Hughson
Laura Hussey
Ralph H. Janicki, M.D., Ph.D.
Suzanne Kingsley
Rosemary & Joseph Mirabito
Robert Nelson & Van Broughton Ramsey
Nancy R. & Richard H. Pettibone
Corinne M. Plummer
Quinn Family
Betty N. Robinson
Patricia M. Smith
Dr. & Mrs. Alfred Tinger
Laura & F. Todd Wetzell
Rhonda & Douglas Willies

ORGANIZATIONS AND BUSINESSES

Alpine Rehabilitation & Nursing Center
AX Enterprize, LLC
Coughlin & Gerhart, LLP
Davis-Ulmer Sprinkler Company
Delhi Rehabilitation & Nursing Center
Eastern Managed Print Network
EPIC Landscapes, Inc.
Kinney Drugs Foundation
KPMG, LLP
Leatherstocking Credit Union
Matco Electric Corporation
MedSPAR
The Mid-York Foundation
Mirabito Energy Products
The North Pond Foundation
Norwich Rehabilitation & Nursing Center
Patricia M. & H. William Smith, Jr., Foundation
Postler & Jaeckle Corp.
Preferred Mutual Insurance Company
Robert & Addie Thompson Trust
Schwab Charitable Fund
SEPCO, Inc.
Sodexo, Inc., & Affiliates
TIAA
Vanguard Charitable Endowment Program
Willies Family Foundation

Leadership Circle

The Leadership Circle of the Friends of Bassett comprises donors who contributed between \$2,500 and \$4,999 during 2021.

INDIVIDUALS

Dr. Harlan D. Alpern
Marc & Elaine Bresee
Joan & John Brooks
Beth & Ryan Brooks
James T. & Deborah B. Dalton
Rita Emanuel & John Anagnost
Martha & Joseph Forgiano
Chris & Cay Franck
Dr. & Mrs. Walter A. Franck
Mena & David Freed
Deborah Funk-Valois, M.D.,
& Stephen Valois
Beth & Gary Glynn
Patricia & Robert Hanft
Dr. Celeste A. Johns &
Dr. Chris L. Kjolhede
Dawn & Peter Johnson
Greg Knack
Maureen Kuhn &
Caralee Carney
Dr. Katharine W. Lloyd & Family
Margaret E. McGown
& Mark Zeek
Lynne & Kai Mebust
Maureen Fitzgerald Murray, R.N.
James & Inge Reynolds
Laurence C. Rickard
VanNess & Carrol Robinson
Michelle & Alan Rubin
Dr. Carlton J. Rule
& Mrs. Alisha D. Rule
Rosemary M. Sibbern
Thomas Simpson
Kevin Sloma
Eric & Kathie Stein
Donna & James Vielkind
Albert & Christine Weiss
Patricia Weyland
Martha Yager

ORGANIZATIONS AND BUSINESSES

A & D Transport Services, Inc.
Air Methods
Ameriprise Financial Services, Inc.
Bank of America Charitable
Foundation Employee Program
BPAS Actuarial & Pension
Services, LLC
BR Johnson, LLC
Brooks' Bar-B-Que Charitable
Foundation
Brooks House of Bar-B-Q, Inc.
Chazen, A LaBella Company
Chianis & Anderson
Architects, PLLC
Commercial Investigations, LLC
Community Bank, N.A.
ComTon, Inc.
ConfiData
DalPos Architects &
Integrators
E4H Environments for Health
Architecture
Group Purchasing Services, Inc.
Hummel's Office Plus
KPH Healthcare Services, Inc.
Laborers' Local 17 LECET
LifeNet of New York
Maguire Cardona, P.C.
Mid-Hudson Cablevision
Monaco Cooper Lamme &
Carr, PLLC
NBT Bank
Nixon Peabody LLP
O'Connor First Attorneys
at Law

The Robert and Marjorie
Alpern Foundation
Schlather & Birch, Attorneys
at Law
Slocum-Dickson Foundation
Tritech Healthcare
Management, LLC
Upstate Companies I, LLC
Upstate Medical Physics
Vizient

President's Forum

The President's Forum recognizes donors who made annual gifts between \$1,000 and \$2,499 during 2021.

INDIVIDUALS

Lesley Adams &
David Newman
Sara & Matt Albright
Anonymous (10)
Tricia Asaro & Steven Kroll
Mr. & Mrs. Henry Asher
Brian Barlow
Robert & Mary Basloe
Carol Beechy & Katie Boardman
Harriet P. Berard
Lisa M. Betrus
Marianne Bez & Michael Jerome
Joyce Bitran, D.O.,
& Aaron Harrison, D.O.
Ms. Jennifer Beasdale
Lois & David Brenner
Ann & Anthony Carlisto
Leah C. Carpenter, D.M.D.,
& Scott Carpenter
Pattee Carrier
Natacha & Charles Casale
Helen M. Casey
Philomena Cerone
Mary & Robert Chase
David & Debbie Chlus
Andrea Clapper &
Timothy Holmes
Martha & Paul Clarvoe
Christy & L. P. Coe
Scott A. Cohen, M.D.
Mr. & Mrs. Roger M. Cohn
Bill & Cathy Coleman
James K. Cooley, M.D.
Joann & James Crandall
Robert & Barbara Davidson
John S. Davis, M.D.
Eva Davy
Anne & Robert Dewell, M.D.
Barbara DiCocco
Jennifer Dugan &
Michael Ogden
Phyllis B. Dunning

Karen M. Elting
May & Frank Falknor
Debra Ferrari
Charles R. Feuer, M.D.
Marilyn M. Francis
Lucile & Willard Frisbee
Michael & Linda Garrity
Caroline M. Gomez-Di Cesare
& Jonathan Di Cesare
Taeko Greenlees
Ursula & Charles Hage
Corinne Hahn
Jane & Peter Hamilton
Dr. & Mrs. Lewis Hamilton
Matthew E. & Anne M. Hamlin
Nancy Haney
Gilbert & Barbara Harrington
Elizabeth B. Harvey, Ph.D.
Joan Harvey & Michael Lotze
Lauren & David Haswell, M.D.
Van Zandt Hawn
Lisa & Jeffrey Held
Nick Hellenthal
& Michelle Kennedy
Kristen Herbst
Bruno Hofmann
Tom & Grace Holmes
Marian & Kenneth Hotopp
Susan R. Hughson
Jim & Sherri Hyla
Jeanne Jackson
Ms. Marian E. Jardine
Connie & Michael Jastremski, M.D.
Rev. Betsy Jay
Kathleen & Bruce Johnson
James M. Jordan, AIA
Anne & M. Langhorne Keith
John Ketcham
Dr. Ann Kieler
Roy Korn, Jr., M.D.
Alan J. Kozak, M.D.
Harry & Ellen Levine
Carolyn & Philip Lewis

Elizabeth & Donald Lewis, M.D.
Mr. & Mrs. Paul Lierheimer
Joseph & Anna Lyga
Mr. Peter L. Macarthur
Jane Malin
Frank & Elizabeth Maloney
Lee Marley
Bruce McClennan
Dr. Bertine McKenna
& Mr. Patrick McKenna
Lucinda & Frank W. Mendl
Cindy Mendl & Janis Slack
Phyllis Merrill
John & Kathleen Militello
Tina A. Miller
Tom & Jackie* Morris
Bill & Lynn Moseley
Elizabeth Murwin
& George Allen
Albert Nader
Chuck & Susan Newman
Katherine Nickerson, M.D.,
& Steven Shea, M.D.
Mr. & Mrs. Arthur C. A. Nicol
Henry & Joan Nicols
Don & Sharon Oberriter
Susan & Thomas E. O'Brien
Stephanie & Luis Ocegueda
Laura E. O'Donnell
Jennifer O'Reilly, M.D.,
& James Anderson, Ph.D.
Curtis Pearsall
Robin & James C. Peters, M.D.
Elizabeth Petrie
Mary Gelder Plummer
Albert Pylinski, Jr.
Donald O. Quest, M.D.
Robert & Vera Quigley
Frances K. Raeder
David Redding
Jim & Polly Renckens
William & Christine Reynolds
David & Gail Rowley

**Indicates deceased*

Russell & Mary Lou Ryan
 Janine Sabella, M.D.,
 & Jeffrey Woeppel
 Barbara & Charles Schanz
 Josef Schoell
 Gwen & Rudolph Schuster, D.V.M.
 Olive P. Scott, Ed.D.,
 & Gerald R. Robideau
 Joseph R. Sellers, M.D., &
 Kathleen F. Sellers, Ph.D.
 Abigail & Pierce Sioussat
 C. David & Phyllis Smith
 Jack & Gayle Smith
 Peter & Jeanne Sosnow

Beverly & Richard Starkey
 Ken & Carol Steigelman
 Marisa, Jenna, &
 Richard Sternberg, M.D.
 David Strogatz
 & Rosalind Thomas
 Paul Swinko
 Steven Talevi
 Carol W. Taylor
 Amanda Vanburen
 & Sumeet Makhijani, M.D.
 David & Martha Vaules
 Alan & Linda Vincent
 Pamela & Floyd Vogt

Mr. Thomas F. Walsh
 Jeffrey Whittemore
 & Phyllis Spinner
 Sam & Hilda Wilcox
 Ronette & Scott Wiley
 Hall F. Willkie
 Jack & Dale Young
 Wenli Zheng & Jing Luan
 Laurie Zimniewicz
 John & Kathleen Zogby

**ORGANIZATIONS AND
 BUSINESSES**
 Bank of Richmondville
 Bioforce USA
 Bond, Schoeneck, & King, PLLC
 Brown & Brown of New York, Inc.
 Casella Waste Management
 of NY, Inc.
 Central New York Community
 Foundation, Inc.
 College Association at Delhi, Inc.
 Cooperstown Brewing
 Company
 Cornell Cooperative Extension
 Association of Delaware County

Enterprise Fleet Management, Inc.
 Enterprise Holdings
 Foundation
 Fronstream
 The Glenmede Trust Company
 Hewlett-Packard
 Hill & Markes, Inc.
 Keith & Virginia Smith Family
 Foundation
 Morgan Stanley
 Northern Eagle Beverages, Inc.
 Onco360 Oncology Pharmacy
 Panter Foundation
 Pearsall Associates, Inc
 Persun & Hamlin, P.C.

Roita AdvizeX
 Rotary Club of Little Falls
 Siemens Building
 Technologies, Inc.
 The Sterling Insurance
 Company Foundation
 Strategic Financial Services
 SullivanCotter
 United Way of Sidney, Inc.
 The Walter J. & Anna H.
 Burchan Charitable Trust
 Westminster Consulting
 Zimmet Healthcare Services
 Group, LLC

Contributions to the Friends of Bassett

The following individuals, businesses, and organizations made annual gifts of up to \$999 to the Friends of Bassett during 2021.

\$500 TO \$999

INDIVIDUALS

Ogechi & Chinedu Abara
 Anonymous (6)
 Burton Banks
 Linda & Edwin Belden
 Nancy Bellinger
 & Deming Lindsley
 Richard & Anne Blabey
 James & Dianne Bordley
 Larry K. Brown, M.D.
 Margaret Fitzgerald Buchanan
 Grace Burton & Ronald Seyb
 Ms. Heidi Camardello
 Keitha Capouya
 Sandra Carter
 Steve & Mary Ching
 Linda J. Christie, M.D.
 Gordon Collins
 Dr. & Mrs. Shelby S. Cooper
 Paul & Christy Deringer
 Elaine L. Downing
 Donald M. Doynow, M.D.
 Kathryn P. Faber

Frank Farmer & Frank Kolbert
 Arlene & Harvey Feldmeier
 Thomas Finnegan
 Peggy & Jonathan Flyte
 Sophia & Jonathan C. Fong, M.D.
 Caridad Fuertes
 & Charles Baker
 Jennifer Garlock-Stringer
 Lauraine & William Glockler
 Dr. & Mrs. W. B. Greenough III
 Melinda & Donald Grubb, M.D.
 Marilyn T. Guy
 Brian & Lynn Hall
 Donald Harris
 Steve & Michele Harris
 Dr. & Mrs. James B. Hastings
 Hon. Nancy M. Hisert
 & Dr. Gerald H. Hisert
 Carmen & Michael Isaac
 Albert Kam
 Meghan T. Kamlet, C.R.N.A.
 Hoyt Kelly
 Robert & Joan Klem
 Adrian & Antoinette Kuzminski
 Leonard Lindenmuth

Mrs. Robin Lopez
 John Lynch
 Dr. & Mrs. Herbert J. Marx
 Scott & Nancy McLean
 Jessica & John Meyer
 Dr. R. Curtis Mills
 Carl & Margaret Mugglin
 Tabitha & Carl Mumenthey
 Sarah & Shane Nickle
 Isabelle Niles
 Terence O'Hanlon
 Alex O'Neal
 Olivia & Salvatore Pagliaro, M.D.
 Charles "Jud" Pannaci
 Gretchen Sahler Patterson
 Timothy Pedley, M.D., &
 Barbara Koppel, M.D.
 Colleen & Michael Perrino
 Cailin & John Purcell
 Pamela & Mark Reichelderfer, M.D.
 Virginia Richmond
 Michele & William J. Richtsmeier, M.D.
 Robert G. & Janet R. Rosenberg
 Nancy & Robert Scanlon

Christina & David Scharf
 Ward & Karen Scott
 Larry C. Sidelmann
 Dr. Frank Silagy
 Stanley Silber
 Liza Skiffington
 Bruce E. Smith
 Caroline B. Southworth
 Tim & Gerry Sweeney
 Janet Tamburrino & John Bullis
 Sally & Roy Thomson
 Nancy & David W. Truscott
 Fredda & Bruce Vladeck
 Joe & Joanne Von Culin
 Kimberly & Michael Walchko
 Marilyn S. Wickham
 Pamela & Daniel Wightman
 Marissa & Mark Winther, M.D.
 Debra & Bruce Wollaber

\$100 TO \$499

INDIVIDUALS

Lynn & Robert Abarno
 Anonymous (37)

Steven & Holly Ackerknecht
 Mr. & Mrs. Curtis C. Ackerman
 Ann & Elliot Adams
 Catherine & John R. Adams
 Keith E. & Kay S. Additon
 Beatrice Adler
 Bill & Michelle Adsit, Jr.
 Jo-Anna Alessi
 Wayne L. Alexander &
 Laura Jane Ungolo-Alexander
 Kathryn C. Allen
 Judith & Leonard Amberger
 Mary & Edward Ambrose
 Donna & Douglas Anderson
 Sue & Bruce Andrews
 Phyllis & Michael Ardis
 Dr. & Mrs. Thomas Armistead
 Janice & Willard Armstrong
 Gary & Barbara Atkin
 Joan & Frederic Atkins
 Kari L. Austin
 Jo Anne & Michael R. Aymar
 Gretel & Frank Bachler
 Jane & Salvatore* Baggetta

Kent Baker
 Shannon Baker
 Mr. Thomas J. Balonek
 Walter E. Bange
 Kiersten Barnes
 Marilyn & Fred Barnes
 Thomas & Melissa Barry
 Cathy Bartlett
 Teri & Theodore Basdekis
 Mr. Anthony Basile
 Louis W. Baum, Jr.
 Bernadette & Richard Baylor
 Thomas & Muriel Beattie
 Ralph & Nancy Beisler
 Susan Belasco & Linck Johnson
 Mel & Margaret Bellar
 Joanne & Gerard Benhardt
 Effie M. Bennett-Powe
 Judy & Jerry Berard
 Peggy Bergen-Pavelka
 Suzanne Bers
 Maureen & Steve Bills
 William Blanco
 Melissa Blask

*Indicates deceased

Marcela Bledt	James Carrabba	John G. Davis	Marcia & Neil Foote	Deborah Harper	Claire A. Kepner
Brenda & Malcolm Bloomer	Dorothy & Michael Carroll	Edward V. Dawyot, Jr.	Raymond Fox	Charlotte M. Harrington	Stacy Kessler
Richard Bogardus	Elizabeth & Edward Carroll	Matthew & Nancy Daynard	Nancy & Michael Frank	Francis & Jean Harris	Cindy & Joe Keyser
Scott & Mary Bonderoff	Beth & R. C. Cash	Hans & Karin de Waal	Rebecca & Norman Frederick	Elizabeth Haswell	Charles B. Kieler
Grace & Thomas Bonfiglio	Roger Cerasoli	Frederick C. Degen	Suzan Friedlander	Georgene Hawe	Donna & Wayne King
Dr. Donald Bordley	Deanna Charles	Carl, Lucille, & Florence Degristina	Cynthia & Bruce Fullington	Elizabeth Hayes	Ralph King
Shirley Braman	Lyle & Claire Chastaine	Julia & Thomas Delaurentiis	Donna Fulmer	Linda & David Hazelden	Mr. & Mrs. Steve Klem
Julie Breakey	Dr. Qi Chen	Polly DellaCrosse	Ms. JoAnn Furlan	Karen Hazzard	Jane & Ronald Klump
Jennifer Brelinsky	Roberta & Richard Cheshire	Lawrence A. DeLong	Cara Gennario & Kevin Durgee	Kathleen Healy	Nancy & Bruce Knudsen
Maureen M. Brennan	Joseph & Nancy Chiang	Anthony Deluca & Family	Stephen W. & Helen C. Gendle	Mr. & Mrs. Robert E. Henault	Frederick P. & Nancy W. Konta
John Brereton	Betty Chien	Lois DeLuca	Mr. & Mrs. John W. George, Jr.	Diane & Earl Hendee	M. Suzette Kopecek
Amy L. Bressett	Dale Christman-Webster	Bob & Jean Deming	Mary Suzanne Getman	Arthur Henry	Sharon & Anthony Kroker
Elizabeth & Edward Brickley	Dr. Nicholas Chuff	Dr. Jay V. Dewell	Gloria & Randy Gibbon	Lynn & Eileen Henry	Valerie & George Lafever
Calynne Brockway	Arleen & Stephen Clark	Mr. & Mrs. Paul A. Deysenroth III	Abby Kreh Gibson	Beverly & David Hensle	Bill Lamb & Laura Bliss Lamb
Esther M. Brooker	Joan P. Clark	Jehed Diamond	Patricia & David Gloo	Karen Hermanowski	Bill & Laura Bliss Lamb
Jacqueline & James Brophy	Mr. & Mrs. Peter P. Clark	Paul & Patricia Donnelly	Josephine & Richard Gloo	William H. Heydorn, M.D.	Thomas Landon
Mr. & Mrs. William Brosi III	Barbara & Terry Clark, M.D.	Christine Doxtader	Lynn Glueckert	Fred* & Eleanor Hickein	William Lane
Barbara E. Brown	Patricia Cleary-Barcomb	Karen & Christopher Doyle	Mrs. Helmuth Golda	Lynn Hidek	George Lang
Dr. Michael Brown	Virginia & Neil Clements	Elizabeth T. Dunbar	Mr. & Mrs. Gary L. Goldsmith	Julie & Charles Hill	David A. LaPone
Richard Brown, M.D., & Ann Lindsay-Brown	Chandree & Nino Cogliandro	Susan & Stephen Dunshee	Homer W. Goodier	Janet E. Hillis & William Tuttle	Brad & Barb Lauderdale
Marena & Chester Budney	Elaine & Jerome C. Cohen, M.D.	Nicole Eckler	Marlene Goodman	Susan & Roger Hillstrom	Mr. & Mrs. Delmar D. Law, Jr.
Arthur Bunce	Sue Coleman	Rene & Michael Edick	Mrs. Margaret Goodrich	Liane & Tom Hirabayashi	Dorothy M. Lawyer
Susan & James Buonocore	Jill Collins	Eileen Eglin	Barbara S. & Robert P. Green	Sandra Holliday	Dr. Richard P. Leach
Amy Burczak	Shirley Collis	David & Linda Ehlers	Kathleen & James Greenberg	Joyce M. Holmes	Debora S. Lee, D.O.
Karen & Michael Burgess	Bruce & Kristi Cooper	Patricia Ehrle	Mrs. Deborah Griffin	Judy Hoose	Mr. & Mrs. Thomas J. Patterson II
Brian & Elizabeth Burns	Samuel L. Cooper	Greg & Kathy Eisenhut	Raymond Griffin	Kathleen Horn	Anne Lennebacker
Leighton R. Burns	Charles & Jeanette Cornwell	Joyce & Clarence Ellingsen	Elsworth & Deborah Griffin	Melody & David Houck	Mr. Thomas F. Leo
Betty Ann Buthe	Catherine & David Craig	Kathleen Ellis	Don & Marge Griffith	Jo Anne & Neil Hourihan	Grace Leone
Karen Butler	Melanie & Thomas Craig	Dr. & Mrs. Charles A. Ellsworth	Joan Griffith	Kathryne Howes	Ruth & Arthur Levy, M.D.
& Devereaux Kernan	Randy & Lisa Crapser	Jean & John Endryck	Kristen & David Griger	Linda & John Hoxie	Greg & Phyllis Lippitt
Philip M. Butler	Karen & Randy Crissman	Dr. David & Rene Evans	Florence J. Grill	Cindy & Glenn Hubbell	Kathleen & Robert Littlefield
Arlene M. Bywater	Leslie & Kevin Crosley	Francis Faragon	Jean Guiney	Elizabeth Humes	Harold & Marie Loder
Betsy & Anthony Cabot	John V. Crowley	David Farquhar	Mary & Roland Guinn	Loren Hutchings	Christine M. Logar
Kathleen & Thomas Caffrey	Kathleen & David Curley	Eugene R. Felter	Victoria Gullo	Janet Ivory & Francis May	Rebecca & David Lollman
Nadia & Michael Caleo	Glenn Curley	Mr. & Mrs. Raymond Fernandez	Christine S. Gullow	Victor Iwanow	Mr. & Mrs. Robert Loomis
Amy & Grant Calhoun	Joann & Alan Curtis	Jeff, John J., Louise, & Lynne Ferraro	Margaret Gutierrez-Gibson	Barbara & John Sandman	Rena Mae Lull
Amy Cannon & Wayne Mellor	Jamey & Brooks D'Ambrosio	John & Jean Finch	Ann & Paul Hager	Barbara & Daniel Jones	Mary & Paul Lupinski
Michael P. Cannon	Phyllis & Ralph Dandignac	Christine & James Fitch	Kathleen Hailey	May-Britt Joyce	Kerry Lynch
Nancy S. Cannon	Thomas Danforth	Jackelyn Fleury	Carla Hall	The Joyner Family	Felicia S. Lynd
Fred & Kathy Capozzella	Margaret & Peter Darby	Mr. Joseph Flihan	Gemma Francesca Hall	Nathena & Peter Kain	Nuala MacCabe
Tracy Sioussat, Ph.D., & Mark Cardono	Frances & Larry Davey	Brenda Foland	Rebecca Hall	Karen & Robert Kanarkiewicz	Janice MacLauchlin
Heather Carr	Salvatore Davi	Keith M. Foland	Nancy Hanna	David & Lucy Kelly	Cathleen Madison
	Margaret Davis		Rita & G. Peter Hansen	Mr. & Mrs. William E. Kelly	Frank Madl
	Merideth S. Davis, M.D.		Brenda Ferraro Hanson	Mildred E. Kenyon	

Teresa & Michael Maerz	Elizabeth & Michael Montario	Lorraine Pangman	Robert Rogers	Marty Little Smith	Patricia M. Thomson
Barbara & George Maley	Crystal Moore	Kathy & Spike Paranya	Joan & John Rose	Dylan Snyder	Russell Tilley
Mr. & Mrs. James Malone	Daniel Moore	Mr. & Mrs. Anthony Partenza	John & Maureen Rowley	Edward & Joan Snyder	Janet & Douglas Tobey
Kathleen & Jeffrey Moore	Kathleen & Jeffrey K. Moore	Thomas & Joyce Pearson	Marjorie S. Rowley	James Snyder	Joanne Tobey & Steven Zerby
Maryanne & Edmund Mamrosch	Kathleen & Michael Moore	Elizabeth Peck	Phyllis & Stan Rubin	Tim & Sylvia Snyder	Barbara & Gary Tompkins
Joann Mamrosch	Thomas Moorehead	Harry W. Peplinski	Dr. Kelly M. Rudd & Mr. M. Thomas Rudd	Joan Rumble Sondergaard	William J. Toohy
Sandra A. Mamrosch	Mary Ellen & Gary Morgan	Mary Frances Peruzzi	Sandra & Robert Russell	Carol Spaulding	Daniel Tracy
Joyce & Gary Manning	Nancy Morris	Dr. Theodore D. Peters	Jim & Rhonda Sacket	Mrs. Nancy M. Spaulding	Joseph J. Trancho, Jr.
Melissa & Andrew Marietta	Judy & Harvey Morse	Armella Phillips	Lyra Salire	Anthony Spenello, Jr.	Ramona Truscott
Ann & Roger Marnell	Loretta Mosher	Rita & Alfonso Pineyro	Jennifer Saunders	Janice Sperbeck	Michelle & Paul Trzepacz
Richard L. Marple	Darilyn Moyer & Scott Rosenberg	Rose Anne Pirone	Mr. & Mrs. Thomas Scalise	Susan Sperbeck	Ticker & Martha Twichell
Margaret & Kenneth Martz	Betsy Moynahan	Susan & David Plank	Shelley & Dominick Scarano	John Spielberg & Sarah Seaver	Matt Tye
Mr. Mark Mastroianni	Istar & George Mudge	Andrea & John M. Pontius	Nancy & Fredrick Scherer	Mr. Mark Spinner	Christine Utegg
Mary & Carl Mattice	John Mudge	Sandra & James Poole	Susan Schermerhorn	Ellen St. John	Tom & Betty Vail
Susan & Andrew Matviak	Mary & Frederick Muller	Barbara McEwan Pope	Dan Schlieben	Amy Stack	Anne D. Valentine
Carolyn & Peter Maxim	Mr. & Mrs. Raymond Munetz	Christiane & Douglas Porter	Aviva Schneider	Michael & Jennifer Stecker	Dave & Mary Liz Valentine
Marie & Bruce Maxson	Terrence Murawski	Thomas J. & Joyce W. Posey	Betty & G. Harry Schulte	Carl J. Stefanik	Sherry Van Brink
Arthur Maxwell	Dale Murcra	Gary Potter	Elaine Schwan	Judith Steiner	Diane & Jeremy Van Gelder
Lynn & William Mayer	Anne Myers & Guy Garrett	Elizabeth Prindle	Erika Scott	Mrs. Paul J. Sternberg	Mary Ann & Robert Van Gorder
Mary Ann Mazzola-Looney	Susan & Charles Naef	Kristin & Thomas Pullyblank	Dr. & Mrs. Richard Scranton	Kenneth Stevens	Annette & Michael Vandow
Constance & George McCrea	Jane Nasypany	Judith Purcell	Katie & Richard Sebastian	Alice C. Stiles	Elizabeth & Bruce Vermeulen
Alfred & Judith McDowell	Peggy Nelson, Ph.D.	Scott D. & Gail R. Purdy	Alecia Seeley	Jill S. Stoecklin	George Vickers
Bruce & Christine McKeegan	Louise Newton	Robert & Amy Raffle	Ellen & Keith Seidenberg	Eleanor Stromberg & Douglas Price	Elinor & Gilbert Vincent
Gordon D. McLaren, M.D.	Brian Nicol	Denise Raggi	Patty & Lee Seifried	Pamela Strong	Constance J. Vrooman
Christine McNaughton	Vicki Noble	Dennis A. Rakin	Dian & Barry Seiler	Evelyn Sullivan	Ms. Sue Ellen Wagner
Suzanne McSweeney-Herman	Mr. Bernard M. Nocella	Richard C. Reed	Joseph Serrano	Evelyn & David Sullivan	Robert A. Waid
Sonya & Gary Meiselbach	Kevin Northrop	Harry Reeder	Cynthia & Senator James L. Seward	Rose & Gary Surman	Richard Wakeman
Daniel Mencucci	Susan Oakes-Ferrucci	Elizabeth & Frederic Rehl	John Shaul	Mardrey & Rand Swenson	Dr. James W. Walker & Jane A. DeLisa
Maria Mendez, M.D., & Michael Miller	Patricia & Charles O'Donnell	Thomas & Joyce E.R. Pearson & Ralph Renzulli	Ann & Douglas Shaver	Jason Tabor & Emily DeSantis	Kevin Walker
Jessica Mercado	Marianne O'Donnell	Jennifer & Jamie Reynolds	Carmela & Ralph Sheehan	Richelle C. Takemoto, M.D., & Mr. Dunlap	Susan & Lawrence Walker
Cassandra & Scott Metke	Nancy & Vince Olechnowicz	Nancy S. Reynolds	James E. Shepard	Idalia Talaia	Margaret & Douglas Walrath
Patricia Miele	Mr. & Mrs. Theodore M. Oleszek	Patricia Reynolds	Lou & Joanne Shields	Donna & Frank Talarico	Illece & Joseph Weber
Mr. & Mrs. Michael Mihevc	John Olive	Mrs. Shirley C. Reynolds	Roseanne Shultis	Linda & Henry Talerico	Andrew Weiss & Marc Osterweil
Ms. Beverly Milazzo	Deborah & Wayne P. Oliver	Walter R. Richard	Karen & Manly Shults	Nancy Tallman	Romona & Gerald Wenck
Mary & Brian Miller	Katherine & Charles O'Neill	Debra Richards	Janet Shuster	Jill Tanner	Bridgette West
Ms. Constance Miller	Osborne Family	Carol & Donald Rickard	David Sickler	Mr. David E. Tanney	Terry Westervelt & Gayle Gaetano Westervelt
Melissa Miller	Michael O'Sullivan	Catherine & John Riedl	Patrenia Silver	Keith Taylor	Ron & Ellen Whipple
Jennifer Mitchell	Irene Ovenstone	Christina Risi & Kyle Sibley	Rt. Rev. & Mrs. Mark Sisk	Mr. & Mrs. Harrison Terk	Miriam White
Laureen Mitchell	Lisa & Gary Ovitt	Salvador & Rosina Rivera	Cindy & Robert Skala	Diane & Walter Terry	Oakley & Constance Whiteman
William Mitchell	Cindy Palmer	Dr. Lloyd Roberts	Gary Slater	Erika Thetford	Deni Wicks
William & Leslie Mokay	Cynthia A. Palmer	Michael J. Roberts, M.D.	Marilyn & Joel Smith	Priscilla Thompson	Paula & Terry Wikoff
Linda Monkell	Lola & Richard Palmer	Nancy T. Robinson	Kathleen E. Smith		Joan Wiley
	Marjorie Palmer	Mrs. Pauline M. Rogers			

**Indicates deceased*

Nadene & Keith Willcox
Betty J. Winchester
John & Paula Wissenbach
Carol & James Woodrick
Regina & Joseph Wotasek
Patricia Wright
Steven Yager
Irene & Edward Yarusso
Mr. & Mrs. John J. Zacharek
Karen & Robert Zaleski
Mr. & Mrs. Daniel I. Zeh
Gary & Beverly Zilkowski

\$100 TO \$499

ORGANIZATIONS AND BUSINESSES

A Personal Touch Beauty Spa, Inc.
Allison Oil, Inc.
Anonymous (2)
Blackbaud Giving Fund
C. T. Male Associates, P.C.
The Clark Sports Center
Clinton Tractor & Implement, Co.
Empire Livestock Marketing, LLC
Grace Episcopal Church
Hannaford Brothers Food & Drug
Jordanville Federated Church
K & A Radiologic Technology Services, Inc.
Katharine & Stephen Paranya Charitable Giving Fund
Keuka College
Lawyersville Reformed Church - Women's Ministries
LeChase Construction Services
Mama Maria's Pizzeria Restaurant
McQuade & Bannigan, Inc.
Millennium Pharmaceuticals, Inc.
Peasantman Events, LLC
Renaissance Charitable Foundation
Rotary Club of Cobleskill
Scarzafava & Basdekis & Dadey, LLP

St. Mark's Evangelical Lutheran Church
Takeda Pharmaceuticals North America, Inc.
Texas Instruments Foundation

UNDER \$100

INDIVIDUALS

Francis Xavier Abbott
Dorothy Ackerley
Mr. & Mrs. Curtis C. Ackerman
Lusila Acosta-Pugliese
Cathy & John Albert
Cynthia & Michael Alishauskas
Dale All
Eileen Alvarado
William Amend
Arline & Eric Anderson
Mark Anderson
James Andrews
Anonymous (39)
Johana Arnold
Larry Austin
Jo Eaton & Richard Babin
Kathyanna & Carl Bagnardi
Anna Bailey
June & Allen Baker
Dr. Richard J. Baker
Jeffrey Baldwin
Jean Ballard
Lois E. Banks
Inajayne Banner
Joan & Anthony Barber
Terri & Charles J. Barbuti
Karen Barkman
Karen & David Barlow
Sally Barlow
Catherine & Arthur Barrett
Colette Barretta
Heidi Barrette
Mrs. Patricia A. Bartiromo
Evalyn & Joseph S. Basloe
Bernice Bates
Patricia L. Baylor
Linda A. Beers Origoni

Kathy & Alan Beisler
Betty Jean & Harry Bell
Mary & Joseph* Bellew
William & Eileen Bennett
Lyle & Nancy Bennett
Betty & George Bergleitner
Catherine & Dominic Bethel
Amy & Charles Beveridge
Bruce & Linda Bidwell
Linda & Maurice Binkow
Richard N. Birkett
Janet & Robert Biviano
Ashley & Peter Bizzari
Gail & Gregory Black
Elizabeth Blackmur
Martha & Frank Blankowitz
Bernard Bleakley
Mr. & Mrs. Arthur C. Blessin
Frances Bliven
Linda & Seth Blocker
Antoinette & Lawrence Bobnick
Mary & George Bonczek
Patricia & Donald Bond
Dolores Bono
Betty Boroughs
Wanda Boynton
Mr. & Mrs. Walter Bray
Beverly S. Briggs
Monika & Larry Brodman
Bethany & Robert Bronner
Mrs. John W. Brooks
Colleen Brown
Kathy & Ted Bruetsch
Patricia & Clifford Brunner
Faiga Brussel
David W. Buck
Amy Buel
Karen & Richard Bulow
Genevieve & Zigmund Burdziakowski
Joan & Everett Burger
Barbara Buriello
Michele & Douglas Bush
Gary Butkus

Alberta F. Cahill
Wendy & Dominick Caldiero
Clarence & Rose Marie Caldwell
Thomas Calicchia
Eileen Callahan
Diane & Edward Campion
Domingo Caracciolo
Sandra & Edward Carcione
Eugene Carcone
Madelyn & Joseph Carl
Carol & Richard Carman
Daniel & Rita Carney
Stephanie & Peter Caroli
Cynthia & Francis Carpentier
Joyce & Lawrence Castle
Charles Caughey
Andrea Chaisson
Gloria Chamberlain
Roger Champlin
Susan & Francis Chapman
John Christensen
Eugenia L. Clark
Sid & Penny Clark
Vivienne & Peter Clark
George H. Clingen
Franzen Clough
Mr. Harold F. Coleman
Josephine & Robert Coleman
Mary Collier
Norma & Gary Collins
Christine Congdon
Mr. & Mrs. Charles W. Conklin
Harry & Theresa Conklin
Nancy & James Cooke
Sally & Sydney Cooper
Mary Anne Corsall
Wendy & Alan Covey
David Cox
Rosemarie Craine
Barbara I. Crandall
Laurinda Crandall
Mary Ellen Crawford
Donald Cronkhitte
Sandra & Jan Cronkhitte

Mr. Howard O. Crosby
Sheila & Ronald Cucarro
Mr. & Mrs. Ronald A. Cuccaro
James K. Currie
Jim & Bonnie Currie
Mrs. Jo H. Currier
Barbara & Richard Darius
Dennis & Daughn Darlin
Bettye & Dean Darling
Ms. Cornelia Daubioul
Kathryn & Alan Davino
Sheryl & Guy Davis
Vivian Davis
Sylvia De Swaan
Mabel Klisch Deal
Rose & Lee DeAngelis
Donna & Robert Decker
Florence Degristina
Constance Degroff
Frances & Paul Del Fuoco
Julia & Thomas Delaurentiis
Diane H. Denison
Robert E. Denmeade, Jr.
Barbara Dennison & Christopher Henkels
Winola R. Denny-Smith
Mr. Dennis DeVita
Ingrid & Dennis Diakunczak
Amy Pullman & Robert Diamond
Eva M. Dibble
Mary DiGiorgi
Roxanne & John Dillon
Cathleen & John Distefano
Carole F. & James E. Dixon
John Dobrovolc
Donna & Scott Dodd
Deirdre Donley
Colleen & Michael Donnelly
Sally Donofrio
Berdie Drabent
Nancy & Thomas Dragon
Frances M. Drumm
Philip A. Du Val
Mr. Dennis D. Dunn

Christine Dygert
Donald & Kaye Dyson
Susan F. Eastwood
Patricia & Robert Eaton
Ellen Eccles
Mrs. Jeanette Edick
Greg & Kathy Eisenhut
Patricia Elliott
Melissa Elthorp
Mr. & Mrs. John Emmett
Janice & Roy Emrich
Barbara Erbe
Kenneth Erickson
Mrs. Barbara Fafinski
Karen Faller
Mabel E. Faoro
Carol Farley
Dana Farrell
Lorraine Fava
Janice & Larry Featherly
Veronika M. Feder
M. Patricia Feeney
Mrs. Judith R. Feldman
Joanne & Ronald Feldstein
Bonnie & Eugene Felshaw
Mr. & Mrs. Eugene B. Felshaw
Francine Feltman
Peter A. Ferguson
Luz & James Fernandez
William J. Fisher
David Flansburg
Viola Fletcher
Mary Christa Fogg
Kathleen & David Forbes
Caryn Foster
Esther Fowlston
Jackie Frankl
Mrs. Mary L. Friedlander
Sandra Fritsch
Madeline Froehlich
Theresa & H. Leigh Frye
Laura A. Fuess
Frances Gailey
Richard Gale

Nancy Garrett	Jeanne Hayes	Joan & Eric Knight	Suzanne & James Lovelace	Larry & Gail Miles	Mr. & Mrs. William Pearson
Susan & Jeffrey Gearhart	Jenni Hazlett	Joy Korce	Charles & Mary Lowell	Richard & Joyce Miller	Lora Pedrick
Vera Genua	Nicole Hebert	Judith S. Korman	Mary Ann Luciano	Elizabeth J. Montag	Eloise Peduto
Francis George	Barry & Amanda Hein	Barbara & Rennie Korver	Constance & Stephen Lukac	Mr. & Mrs. Dominick Montesano	Lorraine & Mark Pennington
Janet & David George	Carleen & Harry Henderson	Clydette & Ronald Koslik	Barbara Lyzenga	Mr. Ralph J. Mordocco	Nelson & Marjorie Peterson
Susan Gilchrist	Michelle & Matthew Hendley, Ph.D.	Esther Koury	Nancy & Robert Mable	George & Meredith Moreno	Andrew Pfeufer
Sharon Gillette	Richard E. Herrick, Jr.	Marilyn & Robert Kozakowski	Charlene Macri	Teresa C. Moretti	Donald & Kay Phelan
Ronald Goedtel	Mrs. Sharon Herzog	Jennie Kreis	Elsa L. Makely	Jo Ann & James Morgan	Sarah & Thomas Philon
Mr. & Mrs. William F. Goertemoeller	Elizabeth Hildreth	Katharine Kreisher	Mary Manchester	Alfred Morrone	Dorothy & Henry Phillips
Sharon Gohl-Muserallo	Patrice Hiller	Gordon R. Krick	Mr. Herman F. Markert	Eva Morrow	Michelle Phillips
Dr. Andrew S. Luck & Dr. Judith E. Golden	Joan & Richard Hinman	Margaret & Robert Kruppo	Lucy Marmet	Constance & Donald Moseman	Sarah & Thomas Philon
Margaret & Roy Gorton	Carol & Barry Hirschhoff	Mr. & Mrs. William E. Kuehnle, Sr.	Michele & Roger Marocco	Donald Moseman	Joyce Pickett
Robert Gosselink	Lynn & Thomas Hocking	Mr. & Mrs. Robert L. Kurdt	Edward Marryott	Maria E. Moser	Judy & Bryan Pierce
Elsie & Chester Gould	Shirley & Ronald Holl	Colleen Laing	Stella Martin	Mr. & Mrs. James Moses	Wilma & Raymond Pilote
Melissa & Robert Gould	Dale Holzer	John & Karen Laing	Theresa & Robert Martin	Jill & Timothy Mosher	Marilyn & Peter Players
Ellen Grace	Mr. & Mrs. Peter H. Hooks	Joyce M. Lamb	Deborah L. Marucci	Marjorie I. Murphy	Betty Pohlehen
Shelley & Thomas Graham	Carol Hubbard	Ann & Raymond Lamberson	Natalie Masle	Mary F. Murphy	Donald Polomcean
Margaret Gras	Karen & Robert Hughes	Jean Lamphere	Sandra D. Mason	Patricia Murphy	Rosa & John Posh
Nancy M. Greene	Wendy & Robert Hunt	Rose Lamphere	Charles Matteson	Susan & William Naple	Nancy Potter & David Pearlman
Robert B. Gregory, Sr.	Patricia & Michael Hurley	Laurie Lane	Betsy Matthias	Mr. Robert J. Navratil	Betty & William Poulin
The Greiner Family	Melissa Ippolito	Clara & Dave Lantz	Andrea Mattocks	Marianne Neuber & Bruce Habegger	Ann Powell
Ms. Roberta Griffith	Marti & Ronald Jex	Jamie & Michael LaPorte	Robert & Janice Mau	Sindee & Edward Nevin	Antoinette Prezorski
Patricia & John Grossmann	Helen Johnston	Christine Lash	Betsy & Charles Mazurak	Janet & R. Thomas Newcomer	Katherine & Kenneth Pyle
Mr. & Mrs. Richard Gruber	Marcia & William Jones	Elaine M. Latham	Ardenus McBride	Rev. & Mrs. David C. Newkirk	Ms. Carolyn B. Quackenbush
Jacqueline & Edwin Guntert	Walter Jones	Linda & Walter Lawson	Frank McCann	Jennifer & Ted Newman	Erin Quirk
Kim A. Gustafson	Mr. David C. Jorgensen	Louis Lebel	Inez F. McCumber	Annemarie & John Nichols	Paul Radke
Tsultrim Gyaltsen	Rose Marie Joyce	Marianna P. Leib	Mr. & Mrs. James McDermott	John Nicolosi	Anthony Ragucci
Kathleen Haddad	Perry T. Kane	Mr. John C. Lemmon	Theresa A. McEvoy	James Nordberg	William Ralston
Kathleen & Arthur Hahl	Larry Kanter	Christina & Frank Lennon	Susan McGraw	Joan O'Brien	Laura Rana
Jane Hajeris	Robin Karpiak	Renate Lennon	Christine & Edward McGurrin	Rosalie O'Connor	Brenda Randall
Barbara Hoag	Varvara & George Kastis	Adrienne & Joseph Lentini	Teresa McHone	Jane K. O'Dell	Elizabeth Rando
Douglas Hall	Anna & Stan Kazmerski	Louise E. Leonard	Stephen McKeegan	Ms. Linda M. Oldick	Lynda & Roland Randolf
Howard Hall	Ms. Paula Kearney	R. J. Leonard	Patricia & Edward McKinley	Deborah & Eric Olsen	Tracey & David Ranieri
Mr. & Mrs. Stanley Hall	Cynthia Kelleher	Alice Leskovec	Mary & Thomas McKown	John & Melissa Olsen	Wilma & Edwin Rankins
Peggy & Peter Hannigan	David Keller	Ronald Letteron	Mary & Robert Meier	Ms. Deborah Olson	Gloria Rapalee
Judith & John Hargreaves	Susan Kelly	Mr. & Mrs. Joseph Lindberg	Andy Meigs	Leslie & Steven O'Neill	Colonel & Mrs. Charles R. Rash
Laura Harney	Mr. & Mrs. Paul A. Kennedy	Harry & Bonita Lindsay	Josephine & Robert Melmer	Judith & Arthur Osborne	Richard D. Rathbun
Dorothy Harper	Daniel & Shelley Kentile	Mr. Herbert P. Lindstadt	Margaret & Ronald Menard	Walter Oset	Barbara J. Ray
Mona E. Harris	Rita & Leo Tetenes	Carol Little	Pauline Messenger	Thelma Palmer	Albert J. Read
James Hart	Bernice Key	Helen & Donald Lo Guidice	Pamela & Wayne Metlicke	Diana Parker	Patricia D. Reed
Joseph & Nina Hart	Mr. & Mrs. Edward C. Kiburz	Estella Ann Loitsch	Andrew Meyers	Mr. & Mrs. Brandon A. Partenza	Lori Reeder
Cynthia & Jeffrey Haslun	Wendy & Peter Kiuber	Helen & Edward Lomupo	Barbara Mezik	Sandra Patterson & Angela Schaffer	Kate & Michael Reese
Eric & Deb Haslun	Arlene P. Knapp	Jane Loop	Karen & Paul Mihan		Adelaide & James Reynolds
	Jean & Raymond Knickerbocker	Cathy & Mark Los	Tom & Gale S. Mihevc		Blanche Riccardi

**Indicates deceased*

Helga Rice Freni	Normita & George Santore	Freida J. Snyder	Robert Thoubboron	Mr. & Mrs. La Verne J. Venette	Macy & Scott Wilbur
Richard Richardson	Lesley Sanzo	Carol & Martin Spencer	Mary Ann & Thomas Thouin	Ben & Debbie Vennero	Myrna & Robert Wilday
Linda & Neil Riddell	Geraldine Saunders	Laurie Spencer	Charles F. Thuma	Margaret Vespi	Bill & Angie Wiliczka
Linda & Neil Riddell	Patricia Scheidegger	Ms. Jeanette A. Spina	Stephanie Tinker	Melissa R. Vilacky	John Wilson
Christl H. & Val Riedman	Nancy & Thomas Schenk	Susan & James Spivack	Carolyn & William Todd	Mr. Jack Vineyard	Sylvia & Merrill Wojcik
Kimberly & Gregory Riley	Richard Schmitt	Cathy Stalzer	John Torkelson	Barbara & Michael Virgil	Mr. & Mrs. Jonathan A. Wood
Mark J. Ritzel	Jean Schoenecker	Robin Stasilli	Steve & Candy Torrey	Ross S. Vogt, Jr.	Geraldine & David Wood
Sondra & Donald Roberts	Charles Schwasnick	Jean Steciak	Marlene Towne	Mary Ann Vollkommer	Barbara & Craig Woodard
Neal Roberts	Kathleen & Herman Schwasnick	Kathryn & Hurley Stevens	Denise & Philip Tracy	Gabrielle Waisblatt	Barbara & Andrew Woods
Ethel Robinson	Vincent E. Scinta III	Violetta & Richard Stevens	Carol & Michael Triolo	Rose E. Walker	Paula Woudenberg
Jill A. Robinson	Leona Scott	Bridget & Richard Stinson	Maria & Wendell Tripp	Kenneth Walling	Barbara Wright
Mrs. Marjorie R. Rockefeller	Jane & Alan Seacat	Frank Stock	Mr. & Mrs. Everett G. Trombley, Jr.	Susan & George Walrath	Joanne Yette
Kathie & Lawrence Rockwell	Patricia & Michael Seaman	Kim & Carrie Stockwell	Mary Trombley	Charles Walsh	Irene Young
Geraldine F. Roe	Katherine Seeley	Margaret & David Stoeckle	Yvonne Tropp	Marjorie Walsh	Joan & Lauren Young
Margaret & Stephen Roman	Norma & Ronald Segarra	Barbara & Robert Stokey	Lois Tylutki	Patricia & Henry Walsh	Ella Jane Youngs
Marianne & Anthony Romano	Marcia & William Serafin	Diane Stowell	Leo Tyo	Constance & David Wanat	Sabine & Heinrich Zahn
Catherine M. Rooney	Beverley & Ford Seymour	Ron Stowell	Karen Ubner	Carol B. Ward	Ann Zieno
Margaret & Robert Ross	Carol Shaver	Walker Stowell	Ronald Ullrich	Joseph P. Ward	Jannette Zigaldo
Marlene & Brandt Rostohar	Letty Shaw	Janina Strife	Greta Uncur	Carol & Gary Warn	Nicholas Zombek
Dolores Rothwell	Christine & Dean Shepardson	Patricia Stringham	Marilyn Upton	Ronald G. Warren	
Liboria & Nicolo Rovetto	Elaine & William Shipway	Sally A. Stroh	Rosada & Derwin Utter	Mike & Judy Way	UNDER \$100
Suzanne W. Rowland	Clara Shypski	Barbara & Duane Sturdevant	Barbara Valosin	Ms. Esther Weaver	ORGANIZATIONS AND BUSINESSES
Bruce Rubin	Patricia & Ernest Sills	Julia Suarez	Charmayne & Earl Van Wormer III	Leann & Scott Weaver	A to Z Antiques and Auto
Hartley Russell*	Ms. Deborah J. Simmons	Ms. Barbara W. Sutphen	Robin VanArsdale	Betsy & Richard Weidman	AmazonSmile Foundation
Charles Rutkowski	Mary Siniscarco	Mr. Richard J. Swantak	Wanda & Robert Vanburen	Henry & Rebecca Reynolds Weil	Drs. Luck & Golden, Optometrists, PC
Carole Sabatini	Kathryn A. Slaboc	Firn Swift	Verna M. Vandawalker	Richard Weiss	Illion Police Benevolent Association
Gail E. Sabella	Norma Slawson	Dr. Maureen C. H. Sze	Martha Vanderwey	Susan & Gilbert Welch	Make My Donation, Inc., Network for Good
Donald Saccaro	Barbara Smith	Lisa & Jack Tessier	Denise & John Vandusen	Clare & Alfred Wettemann	Sidney Federal Credit Union
Reba & Richard Sage	Kelley & Gary Smith	Brenda Tessitore	Vincent Vannicola	Janet & Donald Wheeler	TisBest Philanthropy
Doris & Bruce Salisbury	H. Wright Smith	Laura Kim Thompson	Helen & James Varco	Janice Whittaker	
Barbara & William Sanders	June A. Smith	Esther Thomsen	Patricia Ann Varvaro	Frances & Bernd Wiehn	
Lorraine & Raymond Sanford	Susan Smith	Sandra Thorington	Keith & Fay Veitch	Louise & Kenneth Wiernicki	
Mr. & Mrs. Anthony Santaiti	Ozella Snell	Marshall & Sandra* Thorne	Mr. & Mrs. Richard Veith	Lucille & Leon Wiggin	

Employee Champions

Employees throughout Bassett Healthcare Network are recognized as Employee Champions when they donate \$100 or more per year. The Friends of Bassett thanks the following employees for their exceptional support.

Chinedu Abara
Mark Anderson
Frederic Atkins
Kari Austin
Anonymous (2)
Shannon Baker
Brian Barlow
Richard Baylor
Carol Beechy
Linda Belden
Peggy Bergen-Pavelka
Lisa Betrus
Joyce Bitran
Melissa Blask
Scott Bonderoff
Julie Breakey
Jennifer Brelinsky
Amy Bressett
Edward D. Brickley
Calynne Brockway
Jacqueline Brophy
Barbara Brown
Richard Brown
Karen Burgess
Elizabeth Burns

Valerie J. Bush
Heidi Camardello
Leah C. Carpenter, D.M.D.
Heather Carr
James Carrabba
Elizabeth Carroll
Charles Casale
Deanna Charles
Stephen Clark
Patricia Cleary-Barcomb
Jerome Cohen
Scott Cohen
Sue Coleman
Shelby Cooper
Melanie Craig
Deborah Dalton
Christine Doxtader
Donald Doynow
Nicole Eckler
Michael Edick
Patricia Ehrle
Kathleen Eisenhut
Kathleen Ellis
Jackelyn Fleury

Brenda Foland
Caridad Fuertes
Cynthia Fullington
Deborah Funk-Valois
Jennifer Garlock-Stringer
Caroline Gomez-Di Cesare
Jean Guiney
Ann Hager
Brian Hall
Rebecca Hall
David Haswell
Nicholas Hellenthal
Carleen Henderson
Kristen A. Herbst
Liane Hirabayashi
Sandra Holliday
Mun Hong
Tommy Ibrahim
Jeffery Joyner
Meghan Kamlet
Stacy Kessler
Wendy Kiuber
Chris Kjolhede
Reginald Knight

Roy Korn
Alan Kozak
Maureen Kuhn
Sheila LeMaster
Carolyn Lewis
Leonard Lindenmuth
Robin Lopez
Joseph Luz
Cathleen Madison
Sumeet Makhijani
Suzanne McSweeney-Herman
Kai Mebust
Jessica Mercado
Melissa Miller
Jennifer Mitchell
Kathleen Moore
Nancy Morris
Loretta Mosher
Jane Nasypany
David Newman
Susan Oakes-Ferrucci
Luis Ocegüera
Jennifer O'Reilly
Cindy Palmer

James Peters
Elizabeth Prindle
Kristin Pullyblank
Cailin Purcell
Amy Raffle
Denise Raggi
Debra Richards
William Richtsmeier
John Rowley
Carlton Rule
Erika Scott
Katie Sebastian
Alecia Seeley
Patty Seifried
Joseph Sellers
Joseph Serrano
Roseanne Shultis
Stanley Silber
Patrenia Silver
Julie Sorensen
Peter Sosnow
Carol Spaulding
Eric Stein
Kenneth Stevens

Jill Stoecklin
David Strogatz
Pamela Strong
Paul Swinko
Idalia Talaia
Nancy Tallman
Erika S. Thetford
Russell Tilley
Alfred Tinger
Joanne Tobey
Ramona Truscott
Paul Trzepacz
Christine Utegg
James Vielkind
Robert Waid
James Walker
Kevin Walker
Franklin Wetzell
Macy Wilbur
Mark Winther
Carol Woodrick
Regina Wotasek
Irene Yarusso
Robert Zaleski

The Cupola Society

The Cupola Society was formed in 1992 to honor donors who make bequests and lifetime gifts to any entity within the Bassett Healthcare Network.

These legacy gifts, whether made through provisions in estate plans or through such planned-giving vehicles as annuities and trusts, have a lasting impact on our community by supporting the Network's mission to provide quality care throughout our region.

We invite you to become a member of the Cupola Society, created exclusively to honor and recognize people who have helped to support the Bassett Healthcare Network through a planned gift in their wills, trusts, wealth-management, or estate plans. Contact Dr. Dan Worthington at Daniel.Worthington@bassett.org or call 607-322-0341.

You may also visit our website, www.friendsofbassett.org for more information and the tools to assist you with your estate and legacy planning.

Dr.* & Mrs. Allan J. Ahearne	Salenda C. Bush*	Elizabeth Davidson*	Mr. & Mrs. William A. Glockler	Glenford Hubbell*	Mr.* & Mrs.* Frederick H. McGown, Jr.
Dr. Kristen A. Ahern	Joan R. Butler	Ralph G. Davidson*	Elizabeth McCray Godley*	Susan R. Hughson	N. Merrell, M.D., & C.F. Malack
Michael Akerley	Betsy & Anthony Cabot	Jean* & John S. Davis, M.D.	Dr. & Mrs. Michael S. Gold	Susan & Thomas Hughson	Carole L. Mihalko*
Keri Allen	Mrs. Margaret S. Cady*	Merideth S. Davis, M.D.	Alfreda Goldring*	Mr. Richard C. Jackson*	Joan M. Miller*
Edward C. Allston*	Eleanor L. Cain*	William K. Davis	Mr. Thomas Goodyear*	David Jalkower & Carol Spinelli	Donald & Jane Moore
George F. Aney, Esq.	Mrs. Dorothy Campbell*	Gilbert P. Deering*	Ruth E. Gordon*	Ralph H. Janicki, M.D., Ph.D.	Mr. Richard L. Moore
Belle C. Ang*	Anne L. Carpenter*	Douglas M. DeLong, M.D., & Lynn Marsh	Peter R. Gray, M.D.	Anica Jansa*	Mr. & Mrs. William J. Moseley
Anonymous (14)	Pattee Carrier	Donald J. Denison*	Ruth Gregg*	Rev. Betsy Jay	Ms. Irene Mozolewski*
Mr. H. Raymond Armitage*, Jr.	Charles Carrier*	Dorothy Boardman Dewart*	Elsworth J. Griffin, Jr.	Carolyn T. Jenkinson*	Martien Mulder*
Lars M. Avery*	Mr. & Mrs. Stephen M. Cembrinski	Beatrice E. Dolan	Dorothy G. Griffin*	Dr. & Mrs. Dana Jock	Barbara Mulhern
Harry Baer*	Mrs. Mildred Chaffers*	Frederick S. Doolittle*	Kathrene Guyton	Ms. Ruth A. Johnston*	Maureen Murray
Dr. Steffie Baker*	Amelie & John L. Chamberlain III, M.D.	Arnold M. Drogen	Helen Guzik*	Bonnie Kaido*	Ms. Anne Namack*
David & Joyce Barber	Austin C. Chase*	Mr.* & Mrs. Edward W. Duffy	Ken J. Haas	Dr. Ann Kieler	Homer B. Neville*
Scott & Michele Barrett	Ernest W. Chase*	S. Marcia Dugan*	Miss Joan Estelle Haberek	Mrs. Virginia J. Kintz*	Robert Paul Nicholson*
H. Joseph Barthold II	Mrs. Doris R. Christiana*	Katherine* & Albert* Dugas	Charles & Ursula Hage	Arthur E. Laidlaw,* M.D.	Henry & Joan Nicols
Mary & Robert Basloe	Austin T. Christman*	Mary E. Dunkle	Gemma & Lewis R. M.* Hall	Margaret Leal*	Ms. Viola G. Null*
Charlotte E. Becker*	Richard C. Churchill	Phyllis Dunning	Myrtle Hall*	Ms. Sheila F. LeMaster & Mr. Thomas J. Patterson	Kenneth & Jane Olcott
Mr. Roger Becker*	Madalyn Cimino*	Dr. Francis P. Egan*	Peter & Jane Hamilton	Ms. Janet M. LeRoy	Barbara Oliver*
Joanne* & William* Beischer, Ph.D.	Mr. George C. Collie*	James W. Elliott*	Dr. & Mrs. Lewis L. Hamilton	Carol Lewis*	Dr. Virginia L. Oliver* & Dr. Ward L. Oliver*
Lisa M. Betrus	Corrine H. Colvin*	Karen & James* Elting, M.D.	John T. Hamilton Jr.*	J. Frederick Lewis*	Olivia & Salvatore Pagliaro, M.D.
Steven & Sally Bieritz	L. Marion Cool*	Ms. Mary Engel Leary*	Irene M. Harbison*	Dr. James J. Lipsky*	Mr. Charles E. Pannaci
Mrs. F. Walter Bliss	Mr. Henry S. F. Cooper, Jr.*	Dr.* & Mrs. Gerald Evans	Dr.* & Mrs.* Francis F. Harrison	Gracia Livingston*	Christopher Patterson
Frances G. Bliven	Joann & James Crandall	Robert R. Farrington*	Elizabeth Harvey*	Linda M. Lowe*	William Phelps
Andrew* & Felicia Blum	Joyce & John Crowter	Charles R. Feuer, M.D.	Dr. & Mrs. James B. Hastings	Susan Lyon*	Corinne M. Plummer
Mrs. Julia R. Bordley*	Barbara J. Curran, R.N.	Mrs. Esther Fink*	Elizabeth H. Hawn*	Rev. Wilfred L. Lyon*	Dr.* & Mrs.* Donald O. Pollock
Marion S. Borst*	William H. Currie*	Marilyn M. & Ernest C.* Francis	William H. Hermann*	Len & Dot Marsh	Edwin Preiser*
Ms. Shirley Bramley*	Marilyn Dakin	Dr. & Mrs. Walter A. Franck	Ms. Helen S. Hohenhaus*	Mr.* & Mrs.* Donald L. Martin	Olive B. Price*
Frederick Brueck*	James T. & Deborah B. Dalton	Eleanor Garlock*	Lois G. Hopson*	John & Amanda May	Harriet D. Quinlan*
Mrs. Madalyn B. Bryant*	Mr. George R. Danforth*	Sarah Gerken*	Mr. Donald V. Howard*	Mr.* & Mrs.* Francis H. May Jr.	Catherine & Donald Raddatz
Anna Buno*		William F. Gilbert*	John I. Howell*	Mrs. Leona T. McDowell*	
Richard W. Burnett*					

Frances & Paul* Raeder	Dorothy Sampson Rudkin*	Kenneth J. Shepard*	Mrs. Hannah-Lee Stokes*	Miss Dolores M. Veit*	Camilla M. Wood*
Dr. & Mrs. L. Andrew Rauscher	Ms. Shirley Rutherford*	Gen Smerski	Bill & Karen Streck	Mrs. Dorothy C. Wagner*	Mary R. Wright*
Mrs. Hana Rauscher*	Katherine M. Ryder*	Mr. & Mrs. Jack Smith	Dr. & Mrs. David S. Svahn	Dr. Christopher J. Warrell*	Martha R. Yager
Mr.* & Mrs. George I. Reynolds	Dr. & Mrs. Victor A. Sacchi	Mr.* & Mrs. H. William Smith, Jr.	Carol W. Taylor & Family	Albert & Christine Weiss	Theresa H. Youmans*
Mr. & Mrs. J. M. Reynolds*	John Saphier	Mr. Edward C. Smith*	Helen B. Thomson*	Martin Weissman	Dorothy R. Young*
W. Jefferson & Birtie Riley	Robert F. Savadove*, M.D.	Hilda Joscelyn Smith*	Robert C. Troup*	Marion T. Wharton*	Mr. Gordon C. Young*
Mrs. Hilda Clausen Rodman*	Robert & Karen Schlather	Mrs. Archie I. St. John	Richard Truax*	Anna K. Whipple*	William F. Ziegler*
Mr.* & Mrs. Carl Roemer	Mrs. Helen Schoell*	Mr. & Mrs. Edward W. Stack	Vera* & Myron* Trumbull	Mr.* & Mrs.* Richard A. White Sr.	Virgil E. Zininger*
Harriett C. Rogers*	Mrs. Janette V. Schoolcraft*	Horace Staley*	Dorothy W. VanDeusen*	Mrs. Edith M. Wilkinson*	
Frank Rollins*	Gwen & Rudy Schuster, D.V.M.	Mr.* & Mrs.* Charles A. Stevens	Dr. Ralph J. Veenema*	The Woeppel Family	

Tribute Gifts

Listed below are the names of individuals and organizations for whom tribute gifts were made in 2021.

GIVEN IN HONOR OF:

Dr. Peter Arquin

Erna Morgan McReynolds
& Tom Morgan

Frederic P. Atkins, R.P.A.

Patricia & Donald Bond

Dr. Samuel S. Badalian

Bettye & Dean Darling

Bassett Health Center Schoharie

Dawn & Peter Johnson

All Staff at Bassett Healthcare Network

Thomas Simpson

Pain & Palliative Care Department Patients

Carol Beechy &
Katie Boardman

Bassett's Residents and Interns

Carol Beechy &
Katie Boardman

Bassett Medical Center Caregivers

Colleen & Michael Perrino

Heather S. Bentley, R.N.

Sandra & Robert Russell

Dr. Carlos E. Bermejo

Samuel L. Cooper
Connie & Alan Leist
Betty J. Winchester

Dr. Joyce V. Bitran

Rosalie O'Connor

Dr. Eric N. Bravin

Amy Buel

Dr. Michael Budin

Tom & Betty Vail

Dr. Richard Buschatzke

Carolyn & William Todd

Dr. Briana L. Calore

Loren Hutchings

All Doctors, Nurses, and Staff at Cobleskill Regional Hospital

Terence O'Hanlon
Russell & Mary Lou Ryan
Mr. & Mrs. John J. Zacharek

Cobleskill Regional Hospital Emergency Room Staff

Russell & Mary Lou Ryan

Dr. Jennifer Congdon

Samuel L. Cooper

Covid-19 Vaccine Administrators

Randy & Lisa Crapser

Dr. James T. Dalton

Richard Brown, M.D.,
& Ann Lindsay-Brown
Wendy & Alan Covey
Michele & William J.
Richtsmeier, M.D.

David Strogatz &
Rosalind Thomas

Henry & Rebecca
Reynolds Weil

Francesca Zambello
& Faith Gay

Dr. Bruce M. Daly

Richard L. Marple

Dr. Subashini R. Daniel

Francesca Zambello
& Faith Gay

Ms. Grace C. Darius

Barbara & Richard Darius

Dr. John S. Davis

Anonymous
Michael & Linda Garrity
Dr. & Mrs. James B. Hastings
Bruce McClennan

Dr. Douglas DeLong

Anonymous
Frank Farmer & Frank Kolbert
Darilyn Moyer &
Scott Rosenberg

Mr. John C. Dorr

Bridget & Richard Stinson

Karen L. Ehlers

David & Linda Ehlers

Dr. Susan M. Fiore

Betty Chien

Dr. Walter A. Franck

Jim & Sherri Hyla
Chris & Cay Franck

Dr. and Mrs. Walter A. Franck

Lynn Hidek

Courtney A. Graham-Arandia

Carolyn & Philip Lewis

Mr. & Mrs. Peter J. Hamilton

Barbara & Daniel Jones
Robin & James C. Peters, M.D.
Marilyn & Joel Smith

Peter J. Hamilton

Nancy & Vince Olechnowicz

Mrs. Mary C. Harmon

Katharine Kreisher

Dr. Nicholas J. Hellenthal

Patricia & Donald Bond

Kristen A. Herbst

Bettye & Dean Darling

Dr. Emery C. Herman

Bruce McClennan

Dr. Susan D. Huffman

Katharine Kreisher

Ms. Grace P. Ives

Anonymous

Dr. Daniel H. Katz

Richard L. Marple

Dr. Theodor I. Kaufman

Carl, Lucille, & Florence
Degristina

Dr. Maureen Killackey

Mr. & Mrs. Henry Asher

Dr. Eric L. Knight

Richard L. Marple

Dr. Alan J. Kozak

Bill & Laura Bliss Lamb

Ms. Karen L. Krom

Kerry Lynch

Ms. Maureen E. Kuhn

Francesca Zambello
& Faith Gay

Dr. Robert A. Lancey

Erna Morgan McReynolds
& Tom Morgan

Little Falls Hospital Nurses in the Dialysis Unit

Keith & Fay Veitch

Mr. Peter L. MaCarthur

Pattee Carrier

Dr. Devarajan J. Manu

Richard L. Marple

Dr. Herbert J. Marx

Bettye & Dean Darling

Dr. Raymond J. McGoldrick

Samuel L. Cooper
Kenneth Erickson

Dr. Nancy B. Merrell

Elaine & Jerome C. Cohen, M.D.

Morris Fire Department & Emergency Squad

Barbara & Michael Virgil

Dr. Thomas Q. Morris

Donald O. Quest, M.D.

Dr. Jennifer Mouriz

Bonnie & Eugene Felshaw

Mrs. Maureen F. Murray

Margaret Fitzgerald Buchanan
Yvonne Tropp

O'Connor Hospital Nursing Staff

Marisa, Jenna, &
Richard Sternberg, M.D.
Bridget & Richard Stinson

Debra Parisian

Dr. Michael Brown

Dr. Anush Patel

Kathleen & Jeffrey K. Moore

Mr. James K. Patrick

Connie & Alan Leist

Dr. Bruce Pinkernell

Mr. & Mrs. Henry Asher

Dr. Donald A. Raddatz

Laurinda Crandall

Dr. Brian Reagan

Francesca Zambello
& Faith Gay

Dr. Mark Reichelderfer

Matt Tye

Dr. Andrew C. Reis

Carl, Lucille, &
Florence Degristina

Dr. Jonathan A. Richman

Lucille & Leon Wiggin

Dr. William J. Richtsmeier

Arnold M. Drogen

Mrs. Maureen Rowley

Christine McNaughton

Ms. Patricia Rowley

Katharine Kreisher

The Honorable James L. Seward

Janet Ivory & Francis May

Mr. Eric H. Stein

Dawn & Peter Johnson

Ms. Helen R. Stiles

Grace Episcopal Church

Mrs. Jean M. Swartz

Salvatore Davi

Reverend Judith Thistle

Mr. & Mrs. William F.
Goertemoeller

Dr. James W. Walker

Kerry Lynch
James Nordberg

Dr. Jerel Zoltick

Erna Morgan McReynolds
& Tom Morgan

Milestone Giving

The Friends of Bassett Healthcare Network salutes the following donors, who have supported Bassett and its affiliated hospitals for a total of five or more consecutive years.

MORE THAN 20 YEARS

Sara & Matt Albright
Mrs. Charles Allen Ashley
Jean Ballard
Mrs. John W. Brooks
Mr. & Mrs. William Brosi III
Brian & Elizabeth Burns
Pattee Carrier
Dr. Nicholas Chuff
Jane Forbes Clark
Mr. & Mrs. Roger M. Cohn
Gloria & Eugene Cole
James K. Currie
Frederick C. Degen
Paul & Christy Deringer
Barbara DiCocco
Donald M. Doynow, M.D.
Arnold M. Drogen
David & Linda Ehlers
Karen M. Elting
Chris & Cay Franck
Dr. & Mrs. Walter A. Franck
Charles R. Feuer, M.D.
Deborah Griffin
Christine S. Gullow
Jacqueline & Edwin Guntert
Jane & Peter Hamilton
Charlotte M. Harrington
Susan R. Hughson
Susan & Thomas Hughson
Roy Korn, Jr., M.D.
Alan J. Kozak, M.D.
Dr. Katharine W. Lloyd & Family
Tina A. Miller
Dr. R. Curtis Mills
Tom & Jackie* Morris
Bill & Lynn Moseley
Barbara Mulhern
Maureen Fitzgerald Murray, R.N.
John Olive
Robin & James C. Peters, M.D.
Rose Anne Pirone

Thomas J. & Joyce W. Posey
Albert Pylinski, Jr.
Donald O. Quest, M.D.
Jim & Polly Renckens
VanNess & Carrol Robinson
Janine Sabella, M.D.,
& Jeffrey Woepfel
Barbara & Charles Schanz
Gwen & Rudolph Schuster,
D.V.M.
Tracy Sioussat, Ph.D.,
& Mark Cardono
C. David & Phyllis Smith
Jack & Gayle Smith
Patricia M. Smith
Caroline B. Southworth
Evelyn & David Sullivan
Vera Talevi
Carol W. Taylor
Dave & Mary Liz Valentine
David & Martha Vaules
Albert & Christine Weiss

15 TO 20 YEARS

Sue & Bruce Andrews
Anonymous (5)
Joan & Frederic Atkins
Terri & Charles J. Barbuti
Robert & Mary Basloe
Thomas & Muriel Beattie
Nancy Bellinger
& Deming Lindsley
Lisa M. Betrus
Debra & Louis Betrus
Scott & Mary Bonderoff
Amy L. Bressett
Jacqueline & James Brophy
Dr. & Mrs. Malcolm
McDougal Brown
David W. Buck
Janet Tamburrino & John Bullis
Keitha Capouya

Fred & Kathy Capozzella
Helen M. Casey
Gloria Chamberlain
Steve & Mary Ching
David & Debie Chlus
Mr. & Mrs. Peter P. Clark
Patricia Cleary-Barcomb
Charles & Jeanette Cornwell
Joann & James Crandall
Ms. Cornelia Daubioul
Robert & Barbara Davidson
Frances & Paul Del Fuoco
Patricia & Robert Eaton
Greg & Kathy Eisenhut
Rita Emanuel & John Anagnost
Brenda Ferraro Hanson
John & Jean Finch
Nancy & Michael Frank
Cynthia & Bruce Fullington
Michael & Linda Garrity
Mr. & Mrs. John W. George, Jr.
Abby Kreh Gibson
Nellie & Robert Gipson
Mr. & Mrs. William F. Goertmoeller
Victoria D. Graham
Barbara S. & Robert P. Green
Dr. & Mrs. W. B. Greenough III
Corinne Hahn
Deborah Harper
Lauren & David Haswell, M.D.
Melissa Ippolito
Ms. Marian E. Jardine
Connie & Michael Jastremski, M.D.
Anne & M. Langhorne Keith
Mr. & Mrs. William E. Kelly
Dr. Ann Kieler
Dr. Celeste A. Johns
& Dr. Chris L. Kjolhede
Mr. & Mrs. Steve Klem
Judith S. Korman
Tricia Asaro & Steven Kroll

Laurie Lane
Marianna P. Leib
Mr. & Mrs. Thomas J. Patterson II
Felicia S. Lynd
Frank & Elizabeth Maloney
Mr. Herman F. Markert
Deborah L. Marucci
Dr. Bertine McKenna
& Mr. Patrick McKenna
Phyllis Merrill
Melissa Miller
Mr. & Mrs. Raymond Munetz
Katherine Nickerson, M.D.,
& Steven Shea, M.D.
Joan O'Brien
Katherine & Charles O'Neill
Lorraine Pangman
Charles "Jud" Pannaci
Mr. & Mrs. Anthony Partenza
Nancy R. & Richard H.
Pettibone
Andrea & John M. Pontius
Harry Reeder
Kate & Michael Reese
Michele & William J.
Richtsmeier, M.D.
Mrs. Pauline M. Rogers
John & Maureen Rowley
Russell & Mary Lou Ryan
Donald Saccaro
Betty & G. Harry Schulte
Joseph R. Sellers, M.D., &
Kathleen F. Sellers, Ph.D.
Christine & Dean Shepardson
Karen & Manly Shults
Janet Shuster
Larry C. Sidelmann
Bruce E. Smith
Marty Little Smith
Edward & Joan Snyder
Carol Spaulding
Mrs. Nancy M. Spaulding

Laurie Spencer
Susan & James Spivack
Carl J. Stefanik
Eric & Kathie Stein
Mrs. Paul J. Sternberg
Kim & Carrie Stockwell
Tim & Gerry Sweeney
Nancy Tallman
Ramona Truscott
Karen Ubner
Donna & James Vielkind
Pamela & Floyd Vogt
Dr. James W. Walker
& Jane A. DeLisa
Marjorie Walsh
Mike & Judy Way
Bridgette West
Marilyn S. Wickham
Irene Young
Ella Jane Youngs
Mr. & Mrs. Daniel I. Zeh

11 TO 14 YEARS

Mr. & Mrs. Curtis C. Ackerman
Donna & Douglas Anderson
Mark Anderson
Anonymous (2)
Gary & Barbara Atkin
Mr. & Mrs. Salvatore F. Baggetta*
Anna Bailey
Shannon Baker
Inajayne Banner
Linda & Edwin Belden
Lyle & Nancy Bennett
Peggy Bergen-Pavelka
Amy & Charles Beveridge
Joyce Bitran, D.O., &
Aaron Harrison, D.O.
Ashley & Peter Bizzari
Richard & Anne Blabey
Jennifer Brelinsky
Barbara E. Brown
Richard Brown, M.D.,
& Ann Lindsay-Brown
Kathy & Ted Bruetsch
Alberta F. Cahill
Wendy & Dominick Caldiero
Thomas Calicchia
Ms. Heidi Camardello
Daniel & Rita Carney
James Carrabba
Elizabeth & Edward Carroll
Betty Chien
Dale Christman-Webster
Arleen & Stephen Clark
Jane Forbes Clark
Christine Congdon
Harry & Theresa Conklin
Dennis & Daughn Darlin
Vivian Davis
Constance Degroff
Winola R. Denny-Smith
John Dobrovolc
Colleen & Michael Donnelly
Elaine L. Downing
Christine Dygert
Kathleen Ellis
Carol Farley
Donald F. Farley
Veronika M. Feder
M. Patricia Feeney
Francine Feltman
Luz & James Fernandez
Debra Ferrari
Marcia & Neil Foote
Caryn Foster
Marilyn M. Francis
Rebecca & Norman Frederick
Jennifer Garlock-Stringer
Stephen W. & Helen C. Gendle
Florence J. Grill
Ann & Paul Hager

*Indicates deceased

Rebecca Hall	Mr. & Mrs. Arthur C. A. Nicol	Lisa & Jack Tessier	Linda & Maurice Binkow	Philip A. Du Val	Barry & Amanda Hein
Patricia & Robert Hanft	Brian Nicol	Charles F. Thuma	Janet & Robert Biviano	Donald & Kaye Dyson	Nick Hellenthal & Michelle Kennedy
Cynthia & Jeffrey Haslun	Mr. Bernard M. Nocella	Joanne Tobey & Steven Zerby	Gail & Gregory Black	Susan F. Eastwood	Richard E. Herrick, Jr.
Dr. & Mrs. James B. Hastings	Kevin Northrop	Mr. & Mrs. Everett G. Trombley, Jr.	Melissa Blask	Nicole Eckler	Julie & Charles Hill
Jeanne Hayes	Susan Oakes-Ferrucci	Michelle & Paul Trzepacz	Patricia & Donald Bond	Rene & Michael Edick	Liane & Tom Hirabayashi
Carleen & Harry Henderson	Jennifer Dugan & Michael Ogden	Barbara Valosin	Grace & Thomas Bonfiglio	Patricia Ehrle	Bruno Hofmann
Lynn & Eileen Henry	Cindy Palmer	Keith & Fay Veitch	Shirley Braman	Melissa Elthorp	Joyce M. Holmes
Sandra Holliday	Diana Parker	Melissa R. Vilacky	John Brereton	Janice & Roy Emrich	Tom & Grace Holmes
Jo Anne & Neil Hourihan	Mr. & Mrs. Brandon A. Partenza	Kimberly & Michael Walchko	Calyne Brockway	Mrs. Barbara Fafinski	Judy Hoose
Rev. Betsy Jay	Timothy Pedley, M.D., & Barbara Koppel, M.D.	Jeffrey Whittemore & Phyllis Spinner	Arthur Bunce	Karen Faller	Linda & John Hoxie
James M. Jordan, AIA	Lora Pedrick	Deni Wicks	Karen & Michael Burgess	Janice & Larry Featherly	Carol Hubbard
Mr. & Mrs. Paul A. Kennedy	Armella Phillips	Ronette & Scott Wiley	Barbara Buriello	Mrs. Judith R. Feldman	Laura & John Hussey
Cindy & Joe Keyser	Christiane & Douglas Porter	Bill & Angie Wiliczka	Grace Burton & Ronald Seyb	Arlene & Harvey Feldmeier	Carmen & Michael Isaac
Wendy & Peter Kiuber	Elizabeth Prindle	Rhonda & Douglas Willies	Michele & Douglas Bush	Eugene R. Felter	Victor Iwanow
Robert & Joan Klem	Cailin & John Purcell	Carol & James Woodrick	Amy & Grant Calhoun	Peter A. Ferguson	Jeanne Jackson
Jennie Kreis	Robert & Vera Quigley	Regina & Joseph Wotasek	Eileen Callahan	Thomas Finnegan	Ralph H. Janicki, M.D., Ph.D.
Mr. & Mrs. William E. Kuehnle, Sr.	Denise Raggi	Martha Yager	Amy Cannon & Wayne Mellor	William J. Fisher	Marti & Ronald Jex
Bill & Laura Bliss Lamb	James & Inge Reynolds	Irene & Edward Yarusso	Michael P. Cannon	David Flansburg	Barbara & John Sandman
Rose Lamphere	Mrs. Shirley C. Reynolds	Joanne Yette	Heather Carr	Brenda Foland	Barbara & Daniel Jones
David A. LaPone	Blanche Riccardi		Roger Cerasoli	Sophia & Jonathan C. Fong, M.D.	Marcia & William Jones
Anne Lennebacker	Debra Richards	6 TO 10 YEARS	Susan & Francis Chapman	Daryl & Phyllis Forsythe	Mr. David C. Jorgensen
Renate Lennon	David & Gail Rowley	Ogechi & Chinedu Abara	Mary & Robert Chase	Esther Fowlston	The Joyner Family
Ruth & Arthur Levy, M.D.	Phyllis & Stan Rubin	Bill & Michelle Adsit, Jr.	Lyle & Claire Chastaine	Deborah Funk Valois, M.D., & Stephen Valois	Nathana & Peter Kain
Mr. & Mrs. Paul Lierheimer	Dr. Carlton J. Rule & Mrs. Alisha D. Rule	Cathy & John Albert	Roberta & Richard Cheshire	Lauraine & William Glockler	Perry T. Kane
Mrs. Robin Lopez	Charles Schwasnick	Jo-Anna Alessi	Joseph & Nancy Chiang	Dr. Andrew S. Luck & Dr. Judith E. Golden	Robin Karpiak
Kerry Lynch	Erika Scott	Cynthia & Michael Alishauskas	John Christensen	Mr. & Mrs. Gary L. Goldsmith	Cynthia Kelleher
Barbara Lyzenga	Katie & Richard Sebastian	Judith & Leonard Amberger	John Christensen	Homer W. Goodier	David & Lucy Kelly
Charlene Macri	Patty & Lee Seifried	Anonymous (30)	John Christensen	Robert B. Gregory, Sr.	Hoyt Kelly
Sandra A. Mamrosh	Joseph Serrano	Dr. & Mrs. Thomas Armistead	Eugenia L. Clark	Patricia & John Grossmann	Daniel & Shelley Kentile
Sandra A. Mamrosh	Patrenia Silver	Kari L. Austin	Joan P. Clark	Mary & Roland Guinn	Stacy Kessler
Edward Marryott	Mary Siniscarco	Kathyanna & Carl Bagnardi	Sid & Penny Clark	Marilyn T. Guy	John Ketcham
Marie & Bruce Maxson	Kathleen E. Smith	Jeffrey Baldwin	Scott A. Cohen, M.D.	Ursula & Charles Hage	Greg Knack
Frank McCann	Tim & Sylvia Snyder	Walter E. Bange	Sue Coleman	Brian & Lynn Hall	Joan & Eric Knight
Susan McGraw	Robin Stasilli	David & Joyce Barber	Bill & Cathy Coleman	Gemma Francesca Hall	M. Suzette Kopecek
Teresa McHone	Marisa, Jenna, & Richard Sternberg, M.D.	Brian Barlow	Dr. & Mrs. Shelby S. Cooper	Nancy Haney	Barbara & Rennie Korver
Suzanne McSweeney-Herman	Kenneth Stevens	Marilyn & Fred Barnes	Melanie & Thomas Craig	Gilbert & Barbara Harrington	Marilyn & Robert Kozakowski
Cassandra & Scott Metke	Diane Stowell	Thomas & Melissa Barry	James T. & Deborah B. Dalton	Donald Harris	Adrian & Antoinette Kuzminski
Andrew Meyers	Pamela Strong	Mrs. Patricia A. Bartiromo	Phyllis & Ralph Dandignac	Steve & Michele Harris	John & Karen Laing
Tom & Gale S. Mihevc	Idalia Talaia	Patricia L. Baylor	Frances & Larry Davey	Joseph & Nina Hart	Jean Lamphere
Kathleen & Michael Moore	Mr. & Mrs. Harrison Terk	Susan Belasco & Linck Johnson	John S. Davis, M.D.	Mary Ellen & Gates Hawn	George Lang
Erna Morgan McReynolds & Tom Morgan		Joanne & Gerard Benhardt	Edward V. Dawyot, Jr.	Elizabeth Hayes	Mr. & Mrs. Delmar D. Law, Jr.
Nancy Morris		Marianne Bez & Michael Jerome	Polly DellaCrosse	Jenni Hazlett	Debora S. Lee, D.O.
Loretta Mosher			Lawrence A. DeLong	Nicole Hebert	Adrienne & Joseph Lentini
Anne Myers & Guy Garrett			Diane H. Denison		Louise E. Leonard
Jennifer & Ted Newman			Anne & Robert Dewell, M.D.		
			Christine Duxtader		

**Indicates deceased*

Carolyn & Philip Lewis
Christine M. Logar
Rebecca & David Lollman
Helen & Edward Lomupo
Mr. & Mrs. Robert Loomis
Suzanne & James Lovelace
Rena Mae Lull
Joseph & Anna Lyga
Nuala MacCabe
Cathleen Madison
Elsa L. Makely
Mr. & Mrs. James Malone
Joann Mamrosh
Joyce & Gary Manning
Lucy Marmet
Michele & Roger Marocco
Richard L. Marple
Sandra D. Mason
Susan & Andrew Matviak
Robert & Janice Mau
Theresa A. McEvoy
Margaret E. McGown
& Mark Zeek
Bruce & Christine McKeegan
Mary & Thomas McKown
Sonya & Gary Meiselbach
Daniel Mencucci
Barbara Mezik
Mr. & Mrs. Michael Mihevc
Mary & Brian Miller
Richard & Joyce Miller
Rosemary & Joseph Mirabito
William & Leslie Mokay
Mr. & Mrs. Dominick
Montesano
George & Meredith Moreno
Jo Ann & James Morgan
Constance & Donald
Moseman

Maria E. Moser
Betsy Moynihan
Mary & Frederick Muller
Tabitha & Carl Mumenthey
Dale Murcay
Patricia Murphy
Jane Nasypany
Peggy Nelson, Ph.D.
Annemarie & John Nichols
Isabelle Niles
Vicki Noble
Susan & Thomas E. O'Brien
Rosalie O'Connor
Jane K. O'Dell
Nancy & Vince Olechnowicz
Leslie & Steven O'Neill
Jennifer O'Reilly, M.D., &
James Anderson, Ph.D.
Cynthia A. Palmer
Lola & Richard Palmer
Thelma Palmer
Harry W. Peplinski
Mary Frances Peruzzi
Nelson & Marjorie Peterson
Susan & David Plank
Barbara McEwan Pope
Eleanor Stromberg &
Douglas Price
Scott D. & Gail R. Purdy
Frances K. Raeder
Laura Rana
Brenda Randall
Elizabeth Rando
Richard D. Rathbun
Barbara J. Ray
David Redding
Walter R. Richard
Virginia Richmond

Laurence C. Rickard
Mark J. Ritzel
Salvador & Rosina Rivera
Sondra & Donald Roberts
Michael J. Roberts, M.D.
Nancy T. Robinson
Robert G. & Janet R.
Rosenberg
Marlene & Brandt Rostohar
Suzanne W. Rowland
Carole Sabatini
Gail E. Sabella
Lorraine & Raymond Sanford
Mr. & Mrs. Thomas Scalise
Elaine Schwan
Ward & Karen Scott
Alecia Seeley
Katherine Seeley
Ann & Douglas Shaver
Lou & Joanne Shields
Roseanne Shultis
Rosemary M. Sibbern
Ms. Deborah J. Simmons
Liza Skiffington
Kathryn A. Slaboc
Anthony Spenello, Jr.
Janice Sperbeck
Ellen St. John
Alice C. Stiles
Jill S. Stoecklin
Sally A. Stroh
Rose & Gary Surman
Laura Kim Thompson
Sandra Thorington
Marshall Thorne
Joseph J. Trancho, Jr.
Yvonne Tropp
Wayne L. Alexander &

Laura Jane Ungolo-Alexander
Christine Utegg
Rosada & Derwin Utter
Tom & Betty Vail
Annette & Michael Vandow
Patricia Ann Varvaro
Mr. & Mrs. Richard Veith
Mr. & Mrs. La Verne J. Venette
Ross S. Vogt, Jr.
Joe & Joanne Von Culin
Robert A. Waid
Richard Wakeman
Kevin Walker
Margaret & Douglas Walrath
Ms. Esther Weaver
Leann & Scott Weaver
Richard Weiss
Susan & Gilbert Welch
Romona & Gerald Wenck
Macy & Scott Wilbur
Marissa & Mark Winther, M.D.
John & Paula Wissenbach
Mr. & Mrs. Jonathan A. Wood
Barbara Wright
Jack & Dale Young
Karen & Robert Zaleski
Francesca Zambello & Faith Gay
Laurie Zimniewicz

5 YEARS

Kathryn C. Allen
Dr. Harlan D. Alpern
James Andrews
Anonymous (2)
Gretel & Frank Bachler
Kent Baker
Cathy Bartlett
Bernadette & Richard Baylor

William Blanco
Martha & Frank Blankowitz
Maureen M. Brennan
Patricia & Clifford Brunner
Gary Butkus
Betsy & Anthony Cabot
Madelyn & Joseph Carl
Elaine & Jerome C. Cohen, M.D.
Karen & Randy Crissman
Donald Cronkhite
Matthew & Nancy Daynard
Eva M. Dibble
Sally Donofrio
Mr. & Mrs. John Emmett
Kathryn P. Faber
May & Frank Falknor
David Farquhar
Lorraine Fava
Jeff, John J., Louise,
& Lynne Ferraro
Frances Gailey
Caroline M. Gomez-Di Cesare
& Jonathan Di Cesare
Margaret Gutierrez-Gibson
Betty & Pat Hamel
Elizabeth Haswell
Shirley & Ronald Holl
Kathleen Horn
Kathleen & Bruce Johnson
Susan Kelly
Charles B. Kieler
Maureen Killackey, M.D.,
& Bruce Pinkernell, M.D.
Sharon & Anthony Kroker
Elizabeth & Donald Lewis, M.D.
Patricia & Edward McKinley
Lynne & Kai Mebust
Mary & Robert Meier

Josephine & Robert Melmer
Carl & Margaret Mugglin
Susan & Charles Naef
Sindee & Edward Nevin
Lesley Adams & David Newman
Stephanie & Luis Oceguera
Marianne O'Donnell
Osborne Family
Michael O'Sullivan
Nancy Potter & David Pearlman
Michelle Phillips
Gary Potter
Ann Powell
Kristin & Thomas Pullyblank
Robert & Amy Raffle
Dennis A. Rakin
Wilma & Edwin Rankins
Albert J. Read
Richard C. Reed
Elizabeth & Frederic Rehl
Patricia Reynolds
Sandra & Robert Russell
Reba & Richard Sage
Normita & George Santore
Norma & Ronald Segarra
Thomas Simpson
Dylan Snyder
Beverly & Richard Starkey
Kathryn & Hurley Stevens
Jason Tabor & Emily DeSantis
Dr. & Mrs. Alfred Tinger
Daniel Tracy
Nancy & David W. Truscott
Diane & Jeremy Van Gelder
Terry Westervelt &
Gayle Gaetano Westervelt
Debra & Bruce Wollaber

2021 Friends of Bassett Healthcare Financials

	2020	2021
REVENUE		
Contributions and grants	2,208,589	5,443,637
Program service revenue	0	0
Investment income	14,332	11,851
Other revenue	56,550	- 10,472
Total revenue	2,279,471	5,445,016
EXPENSES		
Grants and similar amounts paid	3,044,521	5,093,020
Benefits paid to or for members	0	0
Salaries, other compensation, benefits	0	0
Professional fundraising fees	0	0
Total fundraising expenses	0	0
Other expenses	5,300	8,622
Total expenses	3,049,821	5,101,642
Revenue less expenses	- 770,350	343,374
NET ASSETS or FUND BALANCE	Beginning of Current Year	End of Year
Total assets	3,939,422	4,282,796
Total liabilities	0	0
Net assets or fund balance	3,939,422	4,282,796

Friends of Bassett Healthcare Network

Board of Directors & Staff

BOARD OFFICERS

John Zogby
Chair

Subashini Daniel, M.D.
Vice-Chair

Peter J. Hamilton
Regional Vice-President

Jim Patrick
Treasurer

William J. Moseley
Secretary

BOARD OF DIRECTORS

Joyce Barber
Hobart

Heidi Camardello
Dolgeville

David T. Casullo
Little Falls

Arnold Drogen
Oneonta

Arlene G. Feldmeier
Little Falls

Caridad Fuertes, M.D.
Cooperstown

Terry Fulmer, PhD, R.N.
New York

Robert Hanft
Cooperstown

Ursula Hage
Cooperstown

Jeanne Jackson
Manlius

Kathleen Johnson
Cooperstown

Reginald Q. Knight, M.D.
Fly Creek

Steven Kroll
Delmar

Sandy MacDonald
Richfield

Sumeet Makhijani, M.D.
Cooperstown

Jane Malin
Utica

**Maureen Fitzgerald Murray,
M.S., R.N.**
Cooperstown

Michael Perrino
Milford

David P. Rowley
Oneonta

Albert Weiss
Cooperstown

EX OFFICIO

Tommy Ibrahim, M.D.
*President & CEO Friends of Bassett
Healthcare Network*

*President & CEO Bassett Healthcare
Network*

President & CEO Bassett Medical Center

Ben Everidge
*SVP & Chief Development Officer
Bassett Healthcare Network*

Jeffrey Joyner
*SVP Bassett Healthcare Network
Chief Hospital Executive AO Fox
Memorial Hospital*

Eric Stein
*SVP Bassett Healthcare Network
Chief Hospital Executive Cobleskill
Hospital, Little Falls Hospital,
O'Connor Hospital*

BASSETT HEALTHCARE NETWORK FUNDRAISING STAFF

Lynn Bass
Director of Development, Finance

Kyle Leisner
Director of Development, Operations

Sheila LeMaster
Director of Development, Impact Gifts

Daniel Worthington, JD, LL.M., Ed.D.
Director of Development, Legacy Gifts

Jamey D'Ambrosio
Development Manager, Annual Appeals

Katelyn Dwyer
*Development Manager, Integration
Services*

Kim Gustafson
*Development Manager, Special Events/
Projects*

Caitlin Ogden
Development Manager, Major Gifts

Brigitta Rose
*Development Manager, Corporations
& Foundations*

Help us save paper, reduce administrative costs, and ensure that you receive notices and official receipts as quickly as possible by providing us with your email address. Simply email friends.office@bassett.org with the subject line:

Email. We'll also send you our electronic newsletter, Updates, every other month. You can unsubscribe at any time.

Thank you for your support!



“In 2021, we have found ourselves, once again, at a pivotal moment for our organization. To provide exceptional care to our patients and improve the health of the rural communities we serve, we

must remain a thriving, independent health system. For Bassett Healthcare Network that means being on the forefront of innovation in care delivery, transforming our network into a truly integrated health delivery system, and continuing to keep our mission at the center of everything we do. ”

One Atwell Road, Cooperstown, N.Y. 13326

(607) 547-3928 Email: friends.office@bassett.org

Sign up to receive our e-newsletter at: www.friendsofbassett.org



Friends of
Bassett Healthcare Network